



achmadbuchori upgris &lt;achmadbuchori@upgris.ac.id&gt;

---

**[SJI] Editor Decision**

---

**Jumanto Jumanto** <jumanto@mail.unnes.ac.id>  
Kepada: Achmad Buchori <achmadbuchori@upgris.ac.id>

10 Januari 2023 pukul 10.46

Dear Dr Achmad Buchori, Dr. Adhi Kusmantoro, Dr. Aan Burhanuddin

We have reached a decision regarding your submission to Scientific Journal of Informatics, "HYBRID TECHNOLOGY INNOVATION PRODUCTS USING WATER PUMPS INTERNET OF THING (IOT), WIND TURBINE AND SOLAR PANEL AS ONE OF THE SOLUTIONS FOR WATER FEEDBACK IN THE DEMAK AREA".

Our decision is to: Revision Required. Please Revise your work according to the file attachment in OJS System.

Best Regards,  
Editor SJI

Jumanto, M.Cs.  
Universitas Negeri Semarang  
[jumanto@mail.unnes.ac.id](mailto:jumanto@mail.unnes.ac.id)

-----  
**A. Specific Review**

1. Silahkan tandai semua hasil revisi perbaikan atikel Anda dengan menggunakan font warna merah/ Please mark your revision using red font

**B.General**

1. How far do you refer to articles from the Scientific Journal of Informatics, are there similarities, modifications or improvements to articles that have been published on SJI. (minimum 1 or 3 as a reference)
2. Graphic images and flowcharts must be redrawn with image processing software.
3. add a synthesis to the results and discussion section.
4. Bibliography using Mendeley.
5. Indonesian language references are deleted and replaced by references to reputable journals or English
7. Minimum reference for 2018
8. The minimum number of references is 40
9. Add foreign authors (collaboration, as international article trust)

-----  
**Reviewer C:**

There are a few things that might be improved in the title you provided: It might be more clear and concise to list the three technologies being discussed (water pumps, internet of things (IoT), wind turbine, and solar panel) in a more organized manner. For example, "Hybrid Water Feedback Solution Using IoT-Enabled Water Pumps, Wind Turbines, and Solar Panels in the Demak Area"

It might be more clear if the title included more information about the specific focus of the study. For example, "Exploring the Effectiveness of a Hybrid Water Feedback System Using IoT-Enabled Water Pumps, Wind Turbines, and Solar Panels in the Demak Area"

The title might be more impactful if it included a mention of the main benefit or impact of the technology being studied. For example, "Improving Water Sustainability in the Demak Area through a Hybrid System of IoT-Enabled Water Pumps, Wind Turbines, and Solar Panels"

Some things that might be missing from the abstract include:

A summary of the main findings or conclusions of the study. It is not clear

from the abstract what the results of the research were or what the authors concluded from their work.

A discussion of the implications or applications of the study. It is not clear from the abstract how the research being discussed might be useful or applicable in real-world situations.

A clear and concise summary of the methods used in the study. While the abstract mentions some of the methods that were used, it is not presented in a clear and organized manner.

Overall, it might be helpful to revise the abstract to include a clearer statement of the research question, a summary of the main findings, a discussion of the implications or applications of the study, and a clear and concise summary of the methods used. This will help to make the abstract more informative and easier for readers to understand.

## Introduction

Some things that might be improved in the introduction include:

1. A clearer statement of the main focus or purpose of the study. It is not immediately clear from the introduction what the specific research question or objective of the study is.
2. A more concise summary of the relevant literature. The introduction includes a lengthy review of previous research, which may be overwhelming for readers and make it difficult to identify the main points being made.
3. A more clearly defined structure or organization. The introduction covers a wide range of topics and moves between them quickly, which may make it difficult for readers to follow the logical flow of the argument.
4. A clearer explanation of the contribution of the current study. It is not immediately clear from the introduction how the current study builds on or adds to the previous research being discussed.

Overall, it might be helpful to revise the introduction to include a clearer statement of the main focus or purpose of the study, a more concise summary of the relevant literature, a more clearly defined structure or organization, and a clearer explanation of the contribution of the current study. This will help to make the introduction more informative and easier for readers to understand.

## Methods

Some things that might be improved in the methods section :

More detailed descriptions of the materials and equipment used. It would be helpful to include specific information about the types and quantities of materials and equipment used in the study.

A clear explanation of the specific methods used for each step of the research process. For example, it would be helpful to know how the intensity of solar radiation was measured and how the PV capacity was determined. More detailed descriptions of the measurements taken and the data collected. It would be helpful to know more about the specific parameters that were measured (e.g. power, voltage, current) and how these measurements were taken.

A description of the data analysis methods used. It is not clear from the methods section how the data collected in the study was analyzed or interpreted.

A description of the sample or population being studied. It is not clear from the methods section who or what was being studied in the research (e.g. a specific group of people, a particular location, etc.).

Overall, it might be helpful to revise the methods section to include more detailed descriptions of the materials and equipment used, a clear explanation of the specific methods used for each step of the research process, more detailed descriptions of the measurements taken and the data collected, a description of the data analysis methods used, and a description of the sample or population being studied. This will help to make the methods section more informative and allow readers to better understand the research process.

## Conclusion

Some things that might be missing from the conclusion :

A clear summary of the main findings or results of the study. It is not immediately clear from the conclusion what the specific results or outcomes of the research were.

A discussion of the implications or applications of the study. It is not clear from the conclusion how the research being discussed might be useful or applicable in real-world situations.

A discussion of the limitations or potential biases of the study. It is important to acknowledge any limitations or potential biases in the research, as this can help to contextualize the results and implications of the study.

A discussion of directions for future research. It is not clear from the conclusion what the next steps or areas of focus might be for further research in this area.

Overall, it might be helpful to revise the conclusion to include a clear summary of the main findings or results of the study, a discussion of the implications or applications of the study, a discussion of the limitations or potential biases of the study, and a discussion of directions for future research. This will help to make the conclusion more informative and provide a more complete picture of the research being discussed.

---

Scientific Journal of Informatics

<http://journal.unnes.ac.id/nju/index.php/sji>



**41007-104986-1-RV.docx**

759K



achmadbuchori upgris &lt;achmadbuchori@upgris.ac.id&gt;

---

## [SJI] Editor Decision

---

**Jumanto Jumanto** <jumanto@mail.unnes.ac.id>  
Kepada: Achmad Buchori <achmadbuchori@upgris.ac.id>

24 Januari 2023 pukul 14.32

Achmad Buchori:

We have reached a decision regarding your submission to Scientific Journal of Informatics, "HYBRID TECHNOLOGY INNOVATION PRODUCTS USING WATER PUMPS INTERNET OF THING (IOT), WIND TURBINE AND SOLAR PANEL AS ONE OF THE SOLUTIONS FOR WATER FEEDBACK IN THE DEMAK AREA".

Our decision is to: Minor Revision Required

Jumanto  
Universitas Negeri Semarang  
[jumanto@mail.unnes.ac.id](mailto:jumanto@mail.unnes.ac.id)

---

Scientific Journal of Informatics  
<http://journal.unnes.ac.id/nju/index.php/sji>



---

**41007-107815-1-ED.docx**  
758K



achmadbuchori upgris &lt;achmadbuchori@upgris.ac.id&gt;

---

**[SJ] Manuscript Acceptance Letter: 41007**

---

SJ Unnes &lt;sjj@mail.unnes.ac.id&gt;

7 Februari 2023 pukul 14.40

Kepada: achmadbuchori@upgris.ac.id, adhikusmantoro@upgris.ac.id, aanburhanudin@upgris.ac.id

Dear Achmad Buchori, Adhi Kusmantoro, Aan Burhanuddin

Thank you for submitting your manuscript to our journal, Scientific Journal of Informatics.

It's our pleasure to inform you that your paper entitled **"HYBRID TECHNOLOGY INNOVATION PRODUCTS USING WATER PUMPS INTERNET OF THING (IOT), WIND TURBINE AND SOLAR PANEL AS ONE OF THE SOLUTIONS FOR WATER FEEDBACK IN THE DEMAK AREA"** has been **ACCEPTED (Conditional)** to be published in the upcoming issue of Scientific Journal of Informatics.

Based on the Author Fee Policy for the **accepted paper**, you may submit publication fee (IDR 1.700.000) to our official bank account:

Bank Account Number : 127001008677534  
Bank Name : Bank Republik Indonesia (BRI)  
Bank Account Name : Apri Dwi Lestari

Please complete the transaction before 13 February 2023 12:00:00.

Once you do full payment, please do the confirmation by sending your payment proof to this email.

After making payment the manuscript status will be updated from "Accepted (Conditional)" to "Accepted."

For more information, please do not hesitate to contact us.

Thank you for your consideration.

---

**DISCLAIMER**

---

This electronic mail and/ or any files transmitted with it may contain confidential or copyright information of Universitas Negeri Semarang and/ or its Subsidiaries. If you are not an intended recipient, you must not keep, forward, copy, use, or rely on this electronic mail, and any such action is unauthorized and prohibited. If you have received this electronic mail in error, please reply to this electronic mail to notify the sender of its incorrect delivery, and then delete both it and your reply. Finally, you should check this electronic mail and any attachments for the presence of viruses. Universitas Negeri Semarang accepts no liability for any damages caused by any viruses transmitted by this electronic mail.

---



## HYBRID WATER FEEDBACK SOLUTIONS USING INTERNET OF THING (IOT) ENABLED WATER PUMPS IN THE DEMAK AREA-POWERED BY SOLAR PANELS

Achmad Buchori<sup>1</sup>, Adhi Kusmantoro<sup>2</sup>, Aan Burhanuddin<sup>3</sup>

PGRI University Semarang, Jl Sidodadi Timur No 24 Semarang

**Abstract.** Renewable energy in Indonesia is very abundant, one of which is solar energy. With Indonesia's location on the equator, the abundant potential of solar energy can be utilized as an environmentally friendly source of electricity. To increase the potential of solar energy as a source of electricity, it is equipped with a battery storage system. The most widely used electrical energy storage system is the battery. The purpose of this study is the use of solar energy for DC water pumps. The proposed system is also equipped with power, voltage and current monitoring on the solar panel side and on the load side (water pump). The method used is to conduct a literature review to study and find out the development of a power monitoring system using solar panels. The next step is to measure solar radiation, calculate PV capacity and SCC. Furthermore, designing, modeling, simulating, analyzing, and implementing the optimal topology for water pump control using solar panels. The results of the research are water pump control coordination devices using Sonoff with an IoT-based monitoring system. This device is capable of controlling PV and battery power flow.

**Keywords:** Pump Control, Monitoring Power, IoT System, MPPT.

*This work is licensed under a [Creative Commons Attribution 4.0 International License](#).*

### INTRODUCTION

Technological developments and population affect the availability of electrical energy. However, the availability of fossil fuels used by power plants is currently decreasing. Therefore the development of renewable energy continues to be increased to reduce dependence on PLN electricity. One of the uses of renewable energy is solar energy as a source of electricity for water pumps, both for homes and for irrigation. Various studies have been carried out for the use of water pumps. Researcher [1] uses a photovoltaic system as a power provider to operate a pool water pump in a villa in Bali. In this study, the Series and Parallel photovoltaic arrangement is used with a panel system that is integrated with PLN electricity. The tilt angle and placement direction chosen in this study was 15°. Researcher [2] proposes a two-way power flow control from the grid and solar photovoltaic (PV), for a pumping system. Brushless DC (BLDC) motor drive without phase current sensor, used to run water pumps. This system allows consumers to operate the water pump at full capacity for 24 hours regardless of

<sup>1</sup>\* Corresponding author.

Email addresses: 1st author email ( [achmadbuchori@upgris.ac.id](mailto:achmadbuchori@upgris.ac.id) ), 2nd author email ( [adhikusmantoro@upgris.ac.id](mailto:adhikusmantoro@upgris.ac.id) ), 3rd author email ( [aanburhanudin@upgris.ac.id](mailto:aanburhanudin@upgris.ac.id) )  
DOI: 10.15294/sji.v8i1.25356

**Commented [A1]:** "In The Demak Area" dihapus saja. Cukup dijelaskan pada pengambilan data.

**Commented [A2]:** Tambahkan author LN atau dari Universitas lain

**Commented [A3]:** Abstract Ikuti template SJI

climatic conditions. Full utilization of the PV array and pump motor is made for increased reliability of the pumping system. Single-phase voltage source converter (VSC) for bi-directional power flow control between the DC grid and bus. Voltage source inverter (VSI) as a source for BLDC motors, which are operated at the basic frequency. Researchers [3] designed a solar power plant capacity of 12.54 kWp using 33 units of solar modules and an 18.5 kW inverter. The pump can operate for 5 hours 30 minutes in sunny weather with a water discharge of 253 m<sup>3</sup> or fulfills 17.5% of the water requirement for an area of 16 hectares. The investment cost for a solar power pump system is IDR 171,193,500. The operational cost of the new system (solar-powered) per hectare is IDR 6,495/day. Meanwhile, the operating cost of the old system (diesel-powered) per hectare is IDR 15,950/day. Researcher [4] proposed a control strategy consisting of three control units. The first unit is a speed and hysteresis current controller for a BLDC motor pump. Maximum power point tracking (MPPT) is the second control unit, and the battery charge/discharge system is controlled by the third control. Researcher [5] proposes an adaptive control strategy by considering the PV output power and load demand for inverter controlled PV/battery. The proposed strategy can maximize the utilization of PV generation. Inverters are installed in a parallel configuration. Researcher [6] proposed a VSG control strategy by considering coordinated energy management of battery and PV. Through real-time analysis of VSG output power and battery and PV state, dynamic adjustment of PV power output and VSG virtual characteristics is made to realize coordinated control of PV and battery. This strategy effectively increases VSG's dependence on battery capacity by favoring PV power adjustment and asymmetrical control of the battery SOC. Researchers [7] proposed a single-stage and multi-stage water pumping system consisting of renewable energy and an AC motor. The review was carried out based on the type of motor, the power of the electronic interface and the control strategy used. The proposed system uses a PV-Wind turbine source. Researchers [8] undertook a follow-up literature review on the design and performance of solar technologies for water pumping, as well as a transitional perspective for the energy needs of developing countries. In addition, the researcher intends to analyze perspectives on renewable energy technology that governs photovoltaic water pumping system technology. The aim is to identify key knowledge about water pumping design and research gaps about solar panels for water pumps. Researchers point out that the most commonly used water pumping technology configuration is a direct clutch system without battery storage. This system is simple and reliable, mainly used in small scale pumping for small irrigation and domestic use. The main variables that affect the performance of water pumping are: total dynamic head, amount of liquid extracted, variations in solar radiation levels, PV technology and pump motors. For large scale, PV can be used. However, the efficiency of PV and the whole system does not exceed 10% and 5%, so an optimal design is required. Researcher [9] proposes an efficient brushless DC (BLDC) motor drive for a solar PV array (SPV) array in a water pump system. The zeta converter is used to extract the maximum available power from the SPV array. The proposed control algorithm eliminates the phase of the current sensor and adapts the base frequency switching of the source voltage inverter (VSI), thereby avoiding power loss due to high frequency switching. No additional controls or circuits are used for speed control of BLDC motors. Speed is controlled via a VSI variable DC voltage link. A

zeta converter controls via incremental maximum conductance power point tracking (INC-MPPT) for soft starting BLDC motors. Researchers [10] optimize the generated solar photovoltaic (PV) power using the maximum power point tracking technique (MPPT), the DC-DC conversion stage is usually required in solar PV water pumping driven by DC brushless (BLDC). This power conversion stage leads to increased cost, size, complexity and reduced efficiency. A simple control designed to operate the PV array at peak power using a voltage source inverter (VSI), for BLDC motor control. The proposed control eliminates the phase current of the BLDC motor. Researcher [11] proposed a new model 'Semi-Modular Dual-Stack' (SMDS) Motor ST BLDC with 3D-FEM parameters. Photovoltaic (PV) powered submersible electric water pumps are becoming popular in remote areas, due to the unavailability of a PLN source. However, due to the high initial cost of a PV system, brushless dc (BLDC) permanent magnet (PM) motors are more efficient to use when compared to induction motors. Researchers propose a PV-based submersible water pump load from a 100 mm deep well. Researchers [12] proposed a peak current detection algorithm based on wide speed range control without position sensors for PV arrays driven by PM BLDC motors for irrigation water pumping. This algorithm controls the exact initial turnover along with the peak viewing current. Eliminating the use of position sensors and current sensors for rotor position estimation makes drive implementation simpler and more cost effective for farms. Drive operation is tested by simulation and reliability is tested in laboratory prototypes as well as in industrial product prototypes. In the end the researcher [13] designed a soft starter for a three-phase pump motor. The goal is to reduce the starting current when the pump is operated, but be able to generate sufficient torque to operate a three-phase induction motor. In this study a soft starter was developed using an Altera FPGA with a fuzzy logic controller, with a submersible pump power capacity of 5.5 KW.

The main focus of this research is to design a single-phase water pump control using solar panels and batteries equipped with an IoT-based monitoring system. By monitoring we can find out the electric power capacity available for the water pump and can turn on and turn off the pump remotely. After this introduction, we organize our work in section 2: Literature Review. Section 3: Methods. Section 4: Results and discussion. Section 5: conclusion of the work done.

#### A. PV Models

Solar cell or PV is a non-linear component which can be shown in Figure 1 as a current source model.  $I_{ph}$  is the cell current,  $I_D$  is the intrinsic shunt current of the diode,  $R_{sh}$  is the shunt resistance,  $R_s$  is the series resistance of the solar cell, and  $I_{sh}$  is the parallel current source.  $R_{sh}$  values are usually very large, and  $R_s$  values are very small, so the analysis can be neglected. PV cells are grouped into large units called PV modules which are also connected to form PV arrays or PV generators in series and parallel configurations [14].



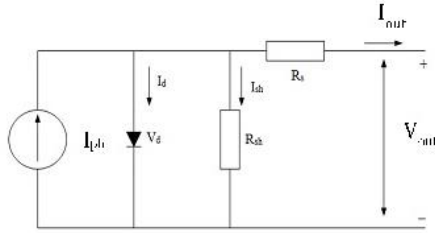


Figure 1. PV cell equivalent circuit model.

Equation of the current voltage of a solar cell with the following equation

$$I = I_{ph} - I_s \left\{ \exp \left( \frac{V + IR_s}{nV_t C N_s} \right) - 1 \right\} - \frac{V + IR_s}{R_{sh}} \quad (1)$$

where  $I_{ph}$  is the photocurrent which depends on the cell and the operating temperature of the solar radiation as defined in equation 1.

$$I_{ph} = \frac{(I_{sc} + K(T_{op} - T_{ref}))\lambda}{1000} \quad (2)$$

The saturation current from temperature changes is expressed by the following equation:

$$I_s = I_{rs} \left\{ \frac{T_{op}}{T_{ref}} \right\}^3 \exp \left\{ \frac{qE_g}{nK} \left\{ \frac{1}{T_{op}} - \frac{1}{T_{ref}} \right\} \right\} \quad (3)$$

$$I_{rs} = \frac{V + IR_s}{R_{sh}} \quad (4)$$

$$I_{sh} = \frac{V + IR_s}{R_{sh}} \quad (5)$$

$$I_d = \left\{ \exp \left( \frac{V + IR_s}{nV_t C N_s} \right) - 1 \right\} I_s N_p \quad (6)$$

The PV circuit model for evaluating array currents, where N parallel ( $N_p$ ) and N series ( $N_s$ ) cells are expressed as follows:

$$I = N_p I_{ph} - N_p I_s \left\{ \exp \left( \frac{\left( \frac{V_{pv}}{N_s} + \frac{IR_s}{N_p} \right)}{KT_{op}m} \right) - 1 \right\} - \frac{\frac{N_p V_{pv}}{N_s} + IR_s}{R_p} \quad (7)$$

Where  $I_s$  is the cell saturation current,  $N_s$  and  $N_p$  are the number of PV panels in series and parallel,  $C$  is the number of cells in the PV panel,  $R_s$  is the series resistance,  $R_{sh}$  is the shunt resistance,  $T_{op}$  is the operating temperature of the cell at 25°C,  $V_{oc}$  is the circuit voltage open PV,  $m$  is the ideality factor,  $K$  is

the Boltzmann constant ( $1.38 \times 10^{-23} \text{ J/K}$ ), and  $q$  is the electron charge ( $1.6 \times 10^{-19} \text{ C}$ ). The following parameters describe a solar cell [15]:

1. The highest current generated by the cell during the condition  $V=0$  is determined by the short circuit current.
2. The open circuit voltage is due to the voltage drop across the diode when  $I_{ph}$  is flowing, where  $I_D = I_{ph}$  and the resulting current is zero.

To ensure optimal system performance, certain system parameters must be considered in the design:

1. The efficiency of photovoltaic (PV) is low, this is due to the influence of internal series and shunt resistances and the effect of recombination on photovoltaics.
2. Since the performance of the PV module is affected by the surface temperature, the module temperature coefficient (TC) must be considered. For Silicon Modules, the temperature correction factor is around  $-0.5\%/^{\circ}\text{C}$ , so it is safe to take a TC of 0.80 [16].
3. Efficiency of other parts of the device including the output of the charging controller, the performance of the DC-AC (inverter) and the output of the battery storage.

#### B. MPPT (Maximum Power Point Tracking)

There are two types of PV systems, isolated systems and grid-connected systems. An isolated PV system is designed to provide AC/DC electrical power to a load. MPPT (maximum power point tracking) is used between the PV array and the load to help obtain the maximum output power and also the mains impedance adjustment at the PV's maximum power output. A control method is used to increase PV system performance and to track the maximum power point. The MPPT algorithm calculates MPP (maximum power point) at any time for each radiation and temperature. MPP changes due to environmental conditions. There are several techniques for implementing MPPT and the most widely used methods are Perturbe and Observe which are known as P&O. This method is based on changing the PV output voltage and observing the power obtained by modifying the duty cycle of the DC/DC converter to achieve maximum power. Another control technique that is also used is the proportional and integral (PI) control method. This control is easy to implement by controlling the input voltage of the buck-boost converter according to the reference voltage, resulting in maximum power [17].

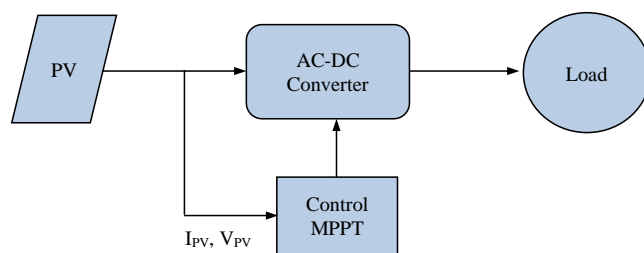


Figure 2. MPPT on a PV system.

For any PV system the output power can be increased by tracking the MPP of the PV module using a controller connected to a DC-DC converter (usually using a boost converter). However, the MPP changes with radiation level and temperature due to the nonlinear characteristics of the PV module. Each type of PV module has its own specifications. In general there is a point on the V-I curve or V-P curve called the MPP, at which the PV system operates at maximum efficiency and produces its maximum output power. This point can be found with the help of MPPT. The PV system with MPPT control is shown in Figure 2 [18].

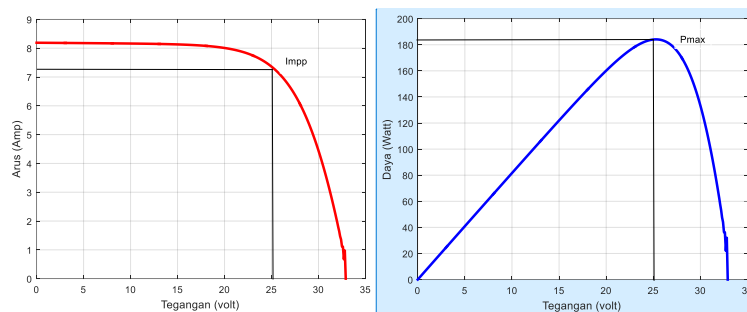


Figure 3. PV curve (PV and IV).

## METHODS

The method used in the research on Water Pump Control with PV Sources and IoT-Based Batteries, through the following stages

1. Measurement of solar radiation intensity.
2. Determination of PV capacity.
3. Determination of MPPT capacity.
4. Determination of battery capacity.
5. Monitoring system design
6. Measurement of power, voltage, and current in the system.

The first step is to measure the intensity of solar radiation as a research location, which serves to calculate the amount of PV capacity used. MPPT is used to extract the PV output power to the battery and load. The MPPT size depends on the PV used. For this study, no inverter was used, because the system uses DC electricity. The battery is calculated based on the duration of use of the water pump. Monitoring system using IoT. The end result is power, voltage, current on the PV side and on the load side (water pump). The study location is at the PGRI University in Semarang and the system device testing location is in Demak. In this study, some of the main equipment used is as follows

- Solar panels
- MPPT type SCC
- 100 Ah battery
- Son Off
- IoT

While additional equipment as follows

- Relay contactor.

**Commented [A4]:** Teks pada gambar masih ada yang berbahasa Indonesia. Silahkan ganti ke bahasa Inggris

- MCB.
- DC relays.
- Water pump.
- Overloaded.

To measure the PV output power, the measuring instrument is used as follows

- Watt meter (measuring power).
- Volt meter (measuring load voltage).
- Ampere meter (measures load current).

The capacity of the PV and battery is determined based on the duration of the water pump's energy use. In this study the water pump operated for two hours. The power capacity of the water pump is 250 watts, so the amount of electrical energy used is 250 Wh. The effective duration of sunlight exposure is five hours, resulting in four 100 Wp PVs and three 100 Ah batteries.

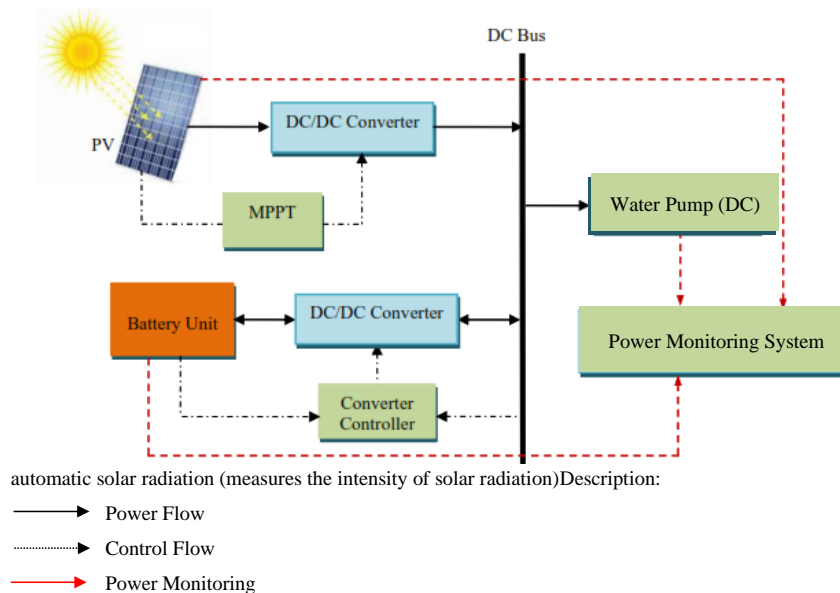


Figure 4. Block diagram of monitoring a water pump with PV Source and Battery.

## RESULTS AND DISCUSSION

### A. Measurement of Solar Radiation Intensity

Measurement of solar irradiance is carried out to determine the length or duration of solar irradiation that occurs for one day in 12 hours, namely at 06.00 - 18.00 local time. Solar radiation measurements were carried out for one year from January to December 2022. Solar radiation measurement data is shown in Figure 5. The measurement locations were carried out on Campus I, Universitas PGRI Semarang. The location has a Latitude of  $-6.9833453^\circ$ , Longitude  $110.44913884360147^\circ$ , Annual global irradiation

1920.7 kWh/m<sup>2</sup> and an average temperature of 28 °C. Meanwhile, the longest sunlight duration with a time range of 06.00–18.00 WIB will occur on November 22 2022 (8.4 hours) and the shortest sunlight duration will occur on November 11, 16 and 19 2022 (0.0 hours).

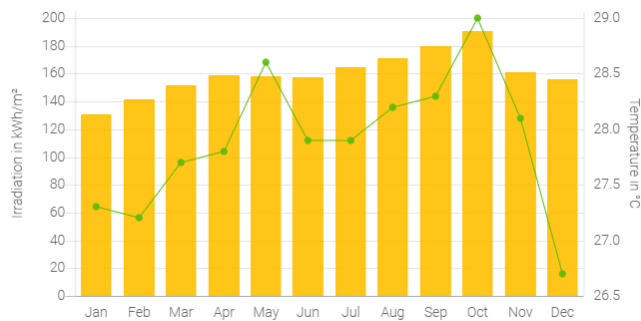


Figure 5. Solar radiation data for 2022.

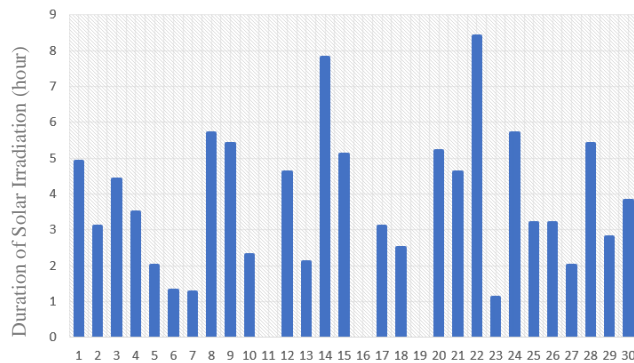


Figure 6. Graph of solar irradiation duration.

#### B. PV output

The month with the highest PV output power in a year in Semarang City is August, with an average of 148.9 kWh. Meanwhile, the lowest PV output power occurred in February with an average of 96.5 kWh. In research on the development of educational game applications, it aims to make the application as a medium for learning to recognize attractive flat shapes, create easy-to-understand learning patterns so that it can improve the learning process about flat shapes, design and create educational games for Android-based flat shapes, [23].

**Commented [A5]:** Tambahkan 2-3 sintesis dari penelitian sebelumnya, yang menunjukkan temuan Saudara lebih unggul dengan penelitian-penelitian sebelumnya.

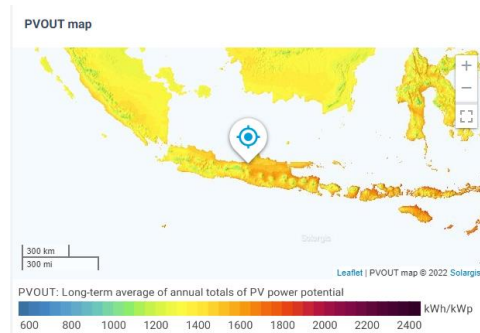


Figure 7. Average power of total PV potential power.

Table 1. Total average hourly PV output power.

Hour	Jan	Feb	Mar	Apr	May	Jun	Jul	Aug	Sep	Oct	Nov	Dec
0-1	-	-	-	-	-	-	-	-	-	-	-	-
1-2	-	-	-	-	-	-	-	-	-	-	-	-
2-3	-	-	-	-	-	-	-	-	-	-	-	-
3-4	-	-	-	-	-	-	-	-	-	-	-	-
4-5	-	-	-	-	-	-	-	-	-	-	-	-
5-6	1	-	-	-	-	-	-	-	4	10	14	6
6-7	57	46	57	79	81	66	61	74	114	132	121	84
7-8	172	172	214	246	257	239	238	266	310	309	273	210
8-9	296	303	366	409	419	401	409	447	487	466	415	331
9-10	388	404	471	512	529	514	532	578	612	575	511	416
10-11	452	485	540	565	591	583	605	657	680	629	553	462
11-12	477	517	570	588	608	599	629	677	691	628	548	473
12-13	462	496	542	557	582	570	510	651	647	590	491	432
13-14	394	432	457	463	494	498	539	572	558	500	399	351
14-15	295	311	332	322	360	379	419	453	435	367	279	250
15-16	175	188	190	184	214	235	271	293	278	220	159	143
16-17	81	89	87	74	79	91	115	123	107	79	61	62
17-18	18	21	11	4	3	3	7	8	5	3	7	7
18-19	-	-	-	-	-	-	-	-	-	-	-	-
Sum	3268	3464	3837	4003	4217	4178	4335	4799	4928	4508	3831	3227

Commented [A6]: Tabel ikuti format SJI template

### C. Calculating Load and Component Needs

Calculation of load power is based on the required power consumption of the water pump used and how long (hours) it is used each day. The results of these calculations will produce power in units of Watt-hours/day. Next, the number of batteries needed is calculated according to the results of the calculation of the power used per day. The next step is to calculate the output power ( $W_p$ ) of the solar panels needed to charge a number of batteries obtained from the calculation of the number of batteries. The pump is used

with a power capacity of 250 watts with a usage time of 1 hour/day.

#### D. Calculating the Number of Batteries

The battery used in this study is 12V, 70 Ah. Battery requirements must also consider the time or day when sunlight cannot come out completely because of the weather, for example it is cloudy for 2 days in a row. In this study used as much as 1 battery.

#### E. Calculating Solar Panel Needs

Research using 100 Wp solar panels. In Indonesia, the average maximum solar energy that can be absorbed by solar panels and converted into electrical energy is an average of 5 hours per day, from 09.00 to 14.00. Therefore, the number of needs for solar panels is 2, which has the specifications in table 2.

Tabel 2. Spesifikasi PV.

Description	Value
Solar Panel Type	Monocrystalline
Maximum power (Pmax)	100 W
Voltage at Pmax (Vmp)	17.2 V
Current at Pmax (Imp)	5.81 A
Short circuit current (Isc)	6.46 A
Open circuit voltage (Voc)	21.6 V
Maximum system voltage	1000 V dc

Commented [A7]: Tabel ikuti template SJI

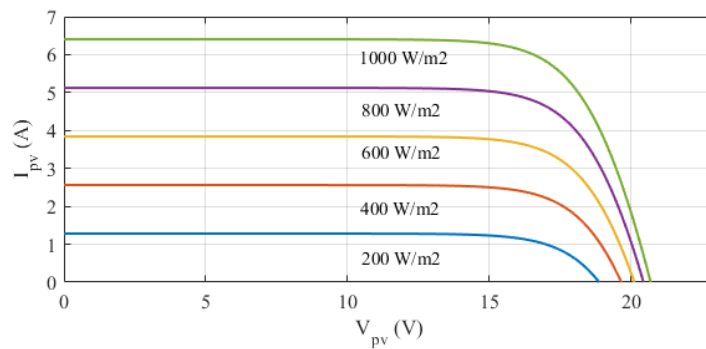


Figure 8. Characteristics of I-V PV.

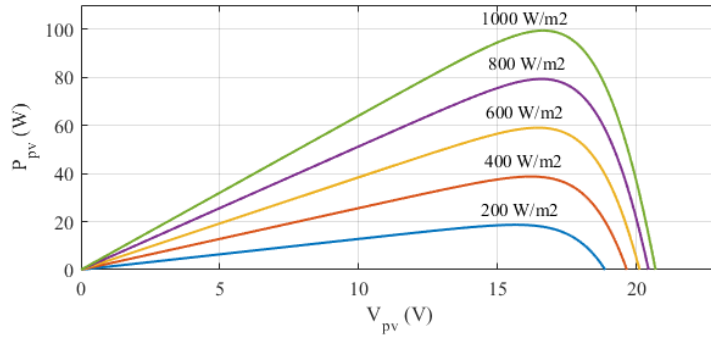


Figure 9. Characteristics of P-V PV.

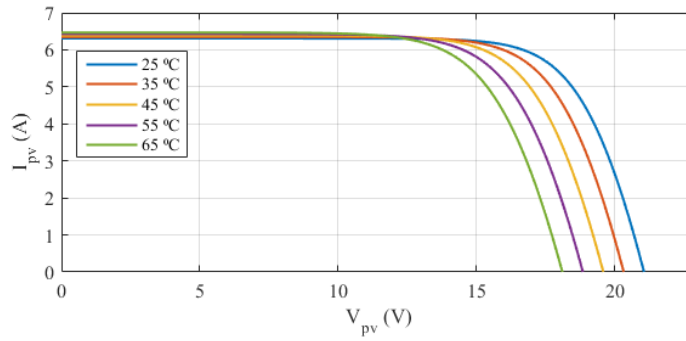


Figure 10. Characteristics of I-V with respect to temperature.

#### F. SCC

The PV output power is basically a response to changes in the intensity of solar radiation and temperature, which are environmental factors. Tracking the Maximum Power Point of solar panels (PV) is very useful for use in PLTS. The intensity of solar radiation and temperature are the main factors that cause the electric power supplied using PV to change. Various MPPT techniques have been widely studied but the Perturb & Observe (P&O) algorithm is the most widely accepted. The P&O algorithm has also been proven to be able to provide good tracking of maximum power points with changes in solar radiation intensity. The P&O algorithm is widely used because it has a simple control structure and only  $I_{PV}$  and  $V_{PV}$  parameter measurements are needed for power point tracking. This method causes a loss of power that will increase according to each process step size perturbation. However, with a smaller perturbation step size, the power loss will turn out to be lower. This MPPT algorithm responds quickly to sudden changes in operating conditions. In this study a PWM type SCC with a capacity of 30 A was used, based on the specifications of the PV used.



### G. Tools Testing

From Table 3 it can be concluded that when sunlight falls towards the maximum PV the highest average voltage reaches 18.43 V and the highest average current reaches 1.24 A at 12.00 WIB. The lowest average voltage is 11.13 V and the lowest average current is 0.06 A which occurred at 17.00 WIB. However, the PV voltage increased from 06.00 WIB by 14.93 V to 17.36 V at 07.00 WIB, then the voltage stabilized at 17.5 V until 15.00 WIB. The output voltage and current of the PV varies due to changes in the condition of the solar irradiance value captured by the PV surface. Table 3 shows the battery voltage rising from 11.86 V to 13.04 V during the charging process. The battery charging voltage to the clock is directly proportional. The longer the charging time, the higher the charging voltage generated from 07.00 WIB to 17.00 WIB an average of 13.81 V and the resulting charging current is an average of 1.33 A. In this test the charging process for a 12 V battery takes 10 hours from the state of the battery 11.86 V to 13.04 V. Fast or slow the charging process depends on the size of the current value and the capacity of the battery used. From table 4 it can be seen that battery energy can be used to supply a water pump for 1 hour with an average load current of 1.53 A.

Table 3. Battery charging test

Hour	Vo (SCC) (V)	Io (SCC) (A)	Vbattery (V)
06.00	13.55	0.15	11.86
07.00	13.70	0.92	11.93
08.00	13.74	1.37	11.98
09.00	13.86	1.39	12.00
10.00	13.94	1.57	12.05
11.00	13.97	1.64	12.15
12.00	14.00	1.79	12.33
13.00	13.95	1.78	12.49
14.00	13.87	1.61	12.67
15.00	13.77	1.54	12.89
16.00	13.72	1.40	13.00
17.00	13.62	0.86	13.04

Commented [A8]: Tabel ikuti template SJI

Table 4. Water pump load.

Minutes to	Vi Inverter (V)	Vo Inverter (V)	I Load (A)
5	13.79	220	1.57
10	13.36	218	1.53
15	13.08	217	1.53
20	12.87	216	1.53
25	12.59	215	1.53
30	12.32	212	1.53
35	12.15	209	1.53
40	11.89	206	1.53
45	11.66	205	1.53
50	11.49	203	1.53
55	11.23	200	1.53
60	11.08	197	1.53

Commented [A9]: Tabel ikuti template SJI

## CONCLUSION

Solar energy in the cities of Semarang and Demak has the potential to be developed into power plants to power irrigation pumps. Based on the measurements obtained an average radiation intensity of 148.9 kWh. Meanwhile, the PV output power is the lowest with an average of 96.5 kWh. Therefore, research was developed on monitoring water pumps with solar energy sources. From the results of this study, the results of a monitoring system design for IoT-based water pump control were found. With this method the user can remotely monitor and control the irrigation pump. The system design also uses a battery storage system. The availability of the number of batteries used in the study is capable of supplying power to the load for one hour with an average load current of 1.53 A, according to the initial design.

## ACKNOWLEDGEMENT

Thank you to all those who have helped in this research, especially LPPM PGRI Semarang University which has provided funding for this research.

## REFERENCES

1. G. A. B. Wirajati, D. M. C. Santosa, B. A. J. Pramana, P. G. S. Haryasa, I. A. G. B. Madrin, "Solar Power System Design Applications For Pool Water Pump Operation At Tourist Accomodation", *Journal of Engineering Design and Technology*, Vol. 21 No. 3, 2021, pp. 159-164.
2. R. Kumar, B. Singh, "Grid Interactive Solar PV Based Water Pumping Using BLDC Motor Drive", *IEEE Transactions on Industry Applications*, Vo.55, No.1, 2019, pp. 5153 – 5165.
3. M. A. Sastradiangga, I. A. D. Giriantari, W. Sukerayasa, "Solar PV Plant as a Replacement for Power Supply of Irrigation Water Pump", *International Journal of Engineering and Emerging Technology*, Vol.5, No.2, 2020, pp.137-143.
4. E. E. A. Zahab, A. M. Zaki, M. M. El-sotouhy, "Design and control of a standalone PV water pumping system", *Journal of Electrical Systems and Information Technology*, Vol.96, No.1, 2021, pp.1-14.
5. S. Angadi, U. R. Yaragatti, Y. Suresh, A. B. Raju, "Comprehensive Review on Solar, Wind and Hybrid Wind-PV Water Pumping Systems-An Electrical Engineering Perspective", *Transaction On Power Elektronik And Applications*, Vol. 6, No. 1, 2021, pp.1-19.
6. C. Roselli, M. Sasso, F. Tariello, "Integration between electric heat pump and PV system to increase self-consumption of an office application, : Renew", *Energy Enviromental Sustainability*, Vol.2, No.28, 2020, pp. 1-6.
7. R. J. Chilundo, U. S. Mahanjane, D. Neves, "Design and Performance of Photovoltaic Water Pumping Systems: Comprehensive Review towards a Renewable Strategy for Mozambique", *Journal of Power and Energy Engineering*, Vol.6, No.1, 2021, pp.32-63.
8. R. Kumar, B. Singh, "BLDC Motor Driven Solar PV Array Fed Water Pumping System Employing Zeta Converter", *IEEE Transactions on Industry Applications*, Vo. 52, No.3, 2019, pp. 2315 – 2322.
9. Rajan Kumar, Member, IEEE, and Bhim Singh, Fellow, IE, Single Stage Solar PV Fed Brushless DC Motor Driven Water Pump, *IEEE Journal of Emerging and Selected Topics in Power Electronics*, Vol. 5, No. 3, 2021, pp. 1377 – 1385.
10. S. Sashidhar, B. G. Fernandes, "A Novel Ferrite SMDS Spoke-Type BLDC Motor for PV Bore-

**Commented [A10]:** Referensi tambahkan lagi. Minimal 30 referensi dari jurnal bereputasi (Scopus).

Referensi berbahasa Indonesia dihapus saja.

- Well Submersible Water Pumps”, IEEE Transactions On Industrial Electronics, Vol. 64, No. 1, 2020, pp.1-10.
11. A. Sen, B. Singh, “Peak Current Detection Starting Based Position Sensorless Control of BLDC Motor Drive for PV Array Fed Irrigation Pump”, IEEE Transactions On Industry Applications, Vol. 57, No. 3, 2021, pp. 2569-2577.
  12. P. Santra, P.C. Pande, A.K. Singh, P. Kumar, “Solar PV pumping system for irrigation purpose and its economic comparison with grid- connected electricity and diesel operated pumps”, Indian Journal of Economics and Development, Vol 4, No. 4, 2019, pp. 1-7.
  13. A. Kusmanto, T. I. Wardani, S. Ristanto, “Soft Starter Induction Motor Three Phase With Fuzzy Logic Controller Inside Delta”, International Journal of Applied Engineering Research, Vol. 12, No. 19, 2020, pp. 8338-8345.
  14. A. Keyhani, "Automatic Generation Control Structure for Smart Power Grids", IEEE Transactions on Smart Grid, Vol.3 , No.3, 2021,
  15. M. Makhlof, F. Messal, H. Benalla," Modeling and Control of a Single-Phase Grid Connected Photovoltaic System", Journal of Theoretical and Applied Information Technology, Vol. 37 No. 2, 2021.
  16. N. Agarwal and A. Kumar, “Optimization of grid independent hybrid PV–diesel–battery system for power generation in remote villages of Uttar Pradesh, India”, Energy for Sustainable Development, Vol. 17, No. 3, 2019.
  17. A. D. Martin and J. R. Vazquez, “MPPT algorithms comparison in PV systems: P&O, PI, neuro-fuzzy and backstepping controls,” *Proc. IEEE Int. Conf. Ind. Technol.*, pp. 2841–2847, 2020.
  18. S. Kumar Kollimalla, M.K. Mishra, “Variable Perturbation Size Adaptive P&O MPPT Algorithm for Sudden Changes in Irradiance”, IEEE Transactions on Sustainable Energy, Vol. 5, No. 3, 2021.