

Competitive Social Capital in Improving SMEs Performance: Role of Knowledge Donating and Knowledge Collecting

by Paper Check

Submission date: 04-Nov-2023 10:20AM (UTC+0400)

Submission ID: 2217097004

File name: mance_-_Role_of_Knowledge_Donating_and_Knowledge_Collecting.docx (269.09K)

Word count: 9718

Character count: 60982

Competitive Social Capital in Improving SMEs Performance: Role of Knowledge Donating and Knowledge Collecting

Sutrisno*

Department of Management, Faculty of Economics and Business, Universitas PGRI Semarang, Central Java, Indonesia

Email: sutrisno@upgris.ac.id

Abstract

The primary aim of this research is to investigate and establish the significance of competitive social capital in augmenting the performance of Batik SMEs in the region of Central Java, Indonesia. This study centers its attention on the factors that influence knowledge donation and knowledge collection. The quantitative methodology used Structural Equation Modelling with Partial Least Squares (SEM-PLS). Participants were recruited from SMEs engaged in batik production in the cities of Semarang, Pekalongan, Kudus, Pati, and Solo via an online questionnaire. The study's results suggest that engaging in knowledge donation and knowledge collecting has a positive and statistically significant influence on the competitive social capital and performance of SMEs. Both the processes of knowledge donation and knowledge collection are key elements in the construction and utilization of a resilient social network, which subsequently has positive impacts on performance. Moreover, it is important to acknowledge that competitive social capital might serve as a mediator in the causal relationship between knowledge donation, knowledge collecting, and business performance. This suggests that the existence of competitive social capital functions as a mechanism for linking the facilitation of knowledge donating and knowledge collecting, ultimately resulting in the development of business performance.

Keywords: Knowledge Donation; Knowledge collecting; SME Performance, Competitive Social Capital

1. INTRODUCTION

Numerous nations owe a great deal to the contributions of small and medium-sized businesses (SMEs), which have been crucial in areas such as economic growth, job creation, and technological advancement (Kamar et al., 2022). In the context of a rapidly evolving and interconnected business landscape, SMEs are confronted with the imperative of maintaining competitiveness and ensuring their survival and expansion by ongoing adaptation to change (Ausat, Suherlan, et al., 2022). To attain this objective, the acquisition of pertinent knowledge and the cultivation of robust relationships with stakeholders are progressively assuming greater significance.

The notion of competitive social capital has garnered growing interest as a determinant that might facilitate the achievement and expansion of SMEs. Competitive social capital refers to an enterprise's capacity to leverage relationships, networks, and interactions with diverse stakeholders within its business ecosystem to attain a competitive edge (Annalah et al., 2023). Within this particular framework, two notable notions that emerge are "knowledge donation" and "knowledge collection," both of which have the potential to enhance the formation of competitive social capital and the performance of SMEs.

The concept of knowledge donation pertains to the capacity of a corporation to disseminate knowledge, expertise, or information to external parties without anticipating immediate reciprocation (Fayyaz et al., 2021). The aforementioned statement demonstrates a proactive

approach toward making valuable contributions to the broader business community. This, in turn, has the potential to enhance networks and foster stronger ties within the business ecosystem. In contrast, the process of knowledge acquisition entails the systematic endeavors of an organization to accumulate information from diverse external sources, encompassing business alliances, research establishments, and the broader business milieu. According to (Zahra et al., 2000), the acquisition of knowledge collection skills empowers organizations to effectively navigate market fluctuations and optimize their utilization of emerging prospects.

Prior studies have investigated the effects of knowledge donation and knowledge acquisition on SME performance, specifically about competitive social capital. The study conducted (Nahapiet & Ghoshal, 1998) examined the interplay between social capital and intellectual capital within an organizational setting. The authors suggest that social capital, encompassing interconnected networks of relationships and shared social standards, might serve as the fundamental basis for intellectual capital. Three dimensions of social capital were discovered, including relational embeddedness, structural gaps, and cognitive social capital. This study posits that organizations that engage in knowledge donation exhibit enhanced social capital. Through the dissemination of knowledge, firms can broaden their network of connections with external stakeholders, while simultaneously cultivating a favorable reputation and fostering trust within these partnerships. This phenomenon leads to the augmentation of competitive social capital, wherein organizations can exploit robust

relationships to acquire important resources, information, and opportunities.²¹

Knowledge donation has a significant effect on innovation capability. Knowledge donation has a significant effect on innovation capability (Xie et al., 2021). It is only natural for coworkers to pool their knowledge and skills for the benefit of the company as a whole. Through the spread of fresh information and the development of novel processes and products, knowledge sharing/donating can boost the capacity organization for innovation (Aghion et al., 2023). Sharing new knowledge with colleagues without being asked or receiving new knowledge from colleagues without asking is a natural thing to find new ideas and try new methods of operation. In addition, knowledge donating is not always a positive predictor for competitive social capital aspects such as individual and organizational innovation attitudes. Knowledge donation outside the organization has an insignificant effect on exploitative innovation, exploratory innovation, and ambidextrous innovation (Kamaşak & Bulutlar, 2010). ICT-based knowledge donation does not affect new ideas generation innovation.

Nevertheless, the importance of the above studies confirms that they provide a strong conceptual foundation on how knowledge-donating practices can shape competitive social capital in an organization. Although this research focuses more on large organizations, the concepts can be applied to SMEs that also have an interest in building positive relationships and contributing to their business ecosystem through knowledge donation.

12 Furthermore, (H. Lin & Lee, 2005) investigated the factors that influence the adoption of e-business by companies. One of the variables under investigation pertained to the impact of knowledge acquisition on a firm's capacity to effectively adapt and make informed decisions about the adoption of novel technologies, such as e-business. According to this study, businesses that possess efficient knowledge acquisition practices are more likely to possess robust competitive social capital. Organizations can establish extensive and profound networks of interactions by acquiring knowledge from many external sources, including commercial partners, research institutes, and adjacent sectors. This practice can facilitate firms in acquiring pertinent information, market trends, and novel prospects that may otherwise remain inaccessible if they simply depend on internal expertise. Within the scope of this study, knowledge pooling is regarded as a variant of competitive social capital, as the capacity to acquire and employ external knowledge emerges as a valued resource in the realm of commercial rivalry. Organizations can enhance their competitiveness and performance by establishing robust networks of contacts and leveraging external knowledge, enabling them to promptly and accurately adapt to market fluctuations (Cenamor et al., 2019).

Nevertheless, the findings of this study do not align with the results of a previous study that concluded that knowledge acquisition has a detrimental impact on competitive social capital. According to (Phelps et al., 2012), it has been observed that in certain situations, the excessive accumulation of information can impede the cultivation of competitive social capital inside companies. The authors contend that an excessive emphasis on

acquiring knowledge from external sources has the potential to undermine internal mechanisms of knowledge generation and collaborative efforts. In the context of this study, excessive knowledge collecting might lead to an imbalance between internal and external knowledge.³

The results of various previous studies discussed above have highlighted the importance of knowledge donating and knowledge sharing to competitive social capital. However, there is still a knowledge gap in understanding how knowledge donating and knowledge collecting interact with competitive social capital and their contribution to SME performance. On the other hand, there are still inconsistent findings when discussing the predictors of increasing competitive social capital through the key variables of this study between knowledge donating and knowledge collecting. Therefore, the purpose of this study is to analyze the effect of knowledge donating and knowledge collecting on the formation of competitive social capital and its implications for SME performance with different models, concepts, and locations.

Globally, competitive social capital plays a crucial role in SME performance. It facilitates access to resources and information that impact a firm's competitiveness and growth. Strong relationships with stakeholders like customers, suppliers, business partners, and international research institutions provide access to the latest technology, specialized expertise, and new market opportunities (He et al., 2020). Competitive social capital enables global collaboration, enhancing innovation by merging diverse perspectives and expertise (Fu et al., 2022). Sharing knowledge, collaborating on product development, and participating in joint research projects boost innovation and global market adaptation. SMEs can expand their global market reach through cross-border relationships and collaborations, entering foreign markets, building international brands, and reaching a broader customer base. This reduces the risk of relying solely on domestic markets with potential fluctuations.

From the previous explanation, global economic growth depends on SMEs. Numerous SMEs can boost employment, income, and economic sustainability (Hernita et al., 2021). Improved SME performance can boost national and global economic stability. Innovation is often associated with SMEs. SME success can boost industrial development and worldwide competitiveness by creating new products, services, and ideas (Prasanna et al., 2019). Due to resource and income variety, a strong SME sector can also make the economy more resilient to external shocks. Good SME performance inspires global entrepreneurship and creativity. This can allow young people to start businesses, innovate, and boost the global economy.

In the context of SMEs, Indonesia stands out for its significant contribution to the sector, especially in developing countries like Indonesia. Indonesia boasts the highest number of SMEs among the ASEAN member countries (Ahdia, 2022). In 2021, Indonesia had approximately 65.46 million MSMEs, a number notably higher than its neighboring ASEAN nations, including Thailand, Malaysia, the Philippines, Vietnam, Cambodia, Singapore, Laos, and Myanmar (Ahdia, 2022). Indonesian MSMEs made substantial contributions to the country's

economy in 2021. They employed 97% of the labor force, contributed 60.3% to the Gross Domestic Product (GDP), and accounted for 14.4% of the country's total exports. Notably, Indonesia had the highest labor absorption rate among ASEAN member countries, ranging from 35% to 85% in neighboring nations. However, in terms of performance, Indonesian MSMEs lag behind Myanmar, which contributed 69.3% to its local GDP. Indonesia's export contribution also falls behind Singapore, Thailand, Myanmar, and Vietnam, with Singapore's MSMEs contributing 38.3%, Thailand with 28.7%, Myanmar with 23.7%, and Vietnam with 18.7%. To enhance its national MSMEs, the Indonesian government is prioritizing digitalization policies as one approach.

Then the question is, what about the phenomenon at the local scale which is the object of this research, namely Batik SMEs in Central Java Province, Indonesia? Is this unit of observation and analysis relevant when juxtaposed with the discussion of knowledge-collecting and knowledge-donating variables that correlate with competitive social capital and performance?

As of 4 February 2021, according to a report by the Ministry of Industry, there were 2,951 companies engaged in batik in Indonesia. The Java region dominates the number of batik companies in the country, reaching 2,631 companies or around 89.15 percent of the total batik companies. Data from the Centre for Handicrafts and Batik (BBKB) of the Ministry of Industry shows that in 2021 there were 208 batik industry units on a large-medium scale, while in 2018 the number of batik businesses on a micro-small and medium scale reached 2,951 units. Central Java is the province with the largest number of batik companies across Indonesia, reaching a total of 2,191 companies. East Java province takes second place with 176 companies, while Bali has 183 batik companies. As the province with the largest number of batik companies, batik export entrepreneurs in Central Java and surrounding areas organized a knowledge-sharing session in the form of a Focus Group Discussion (FGD). The purpose of this FGD is to increase the capacity and competence of SMEs to become experts in exports, coordinate all stakeholders in the Batik export ecosystem, and improve the quality of human resources that have high competitiveness, especially Batik SMEs in Central Java.

According to (Ahmad & Karim, 2019), internal knowledge sharing allows employees to share expertise, which benefits the company. They also noted that four primary aspects affect an organization's internal knowledge-sharing process: knowledge type, incentive to share, opportunity to share, and work environment culture. Further, (Alyafie & Al-Mubarak, 2016) identified hurdles to internal knowledge exchange among Central Java batik SMEs' employees. He says internal hurdles include limited market research and analysis, human resource management, financial constraints, and pricing strategy issues (Chen et al., 2023). That is, knowledge-sharing restrictions hinder innovation. Thus, firms, particularly Batik SMEs, profit by simultaneously participating in competitive and cooperative relationships and harnessing the synergies (Kossyva et al., 2014). SMEs need competitive human resources to boost productivity, performance, and adaptability (Ausat & Suherlan, 2021).

The group's SMEs' competitive capacities affect worldwide business competition. However, SMEs without social capital are less competitive under rising competition. Many SMEs have high transaction costs, minimal industry collaboration, and low use of government assistance agencies and business groups (Ozigi, 2018).

SME owners, especially in the batik sector, rarely consider their target consumers, what products they like, and their business's future in their traditional business operations, which lack a strategic plan for learning and collaborating with other SMEs to improve performance. So, throughout the Covid-19 economic crisis, they were mute and waited for what would happen without improving. SMEs must understand changes in the environment, customer tastes, and social capital networks during the COVID-19 pandemic (Yasa et al., 2020). Building strong intellectual and practical links with important partners would help Batik SMEs in Central Java stretch and surf during disruption. This will give them commercial resiliency and allow them to compete with comparable or different items.

Therefore, in addition to the aforementioned statement of study objectives, this research will also seek to find answers to whether knowledge donating and knowledge collecting have an impact on competitive social capital and SME performance improvement. In the present context, the term "competitive social capital" pertains to the reservoir of social resources that can be leveraged to augment the competitive prowess of SMEs within the marketplace. Within a collaborative network, SMEs have the opportunity to engage in information sharing, exchange experiences, and develop skills collectively. This collaborative environment fosters the establishment of robust commercial partnerships and enhances the competitive standing of these SMEs within the market. Moreover, it is widely considered that the cultivation of "competitive social capital" might enhance the ability of SMEs to expand their reach into wider markets, secure financial resources, and obtain government assistance. SMEs have the potential to strengthen their position within the supply chain and improve their access to vital resources, including money, technology, and market experience, through the development of strong relationships with customers, suppliers, and other business partners. Hence, the notion of "competitive social capital" has surfaced as a prospective mechanism to facilitate cooperative learning inside SMEs, to enhance the performance of Batik SMEs. The previously mentioned methodology has exhibited effectiveness in successfully addressing the operational difficulties encountered by SMEs within the Batik sector.

This research is expected to be a scientific work that has broad benefits. So, in chapter 2 below the author will describe and explain the literature used in this study. This is very important because literature review in research can help build the knowledge base, identify research directions, and provide guidance for better and relevant research. Next, in chapter 3, this study analyses the methodology used to conduct empirical research on the topic of the current study. For in a nutshell, methodology is a crucial framework in research as it helps maintain the quality and integrity of the research, and ensures that the results are relevant and reliable.

2. LITERATURE REVIEW

2.1. Social Capital Theory

The author utilizes the Social Capital Theory to analyze the research topic, a widely supported framework in academic fields like business administration, sociology, economics, and political science. This theory explains how interactions within social networks generate social capital, influencing outcomes like organizational performance. Initially developed by sociologists, including (Bourdieu et al., 1992), it emphasizes the interconnectedness of relationships, social norms, and trust in society. Social capital theory helps understand knowledge sharing, collection, competitive social capital, and SME success. It highlights that organizations, especially SMEs, benefit from access to resources, information, and opportunities through social interactions and networks. Active participation in knowledge exchange can enhance a form of competitive social capital, improving access to strategic opportunities and information, thus influencing organizational performance. Therefore, social capital theory is often used as a conceptual framework in empirical research to explore the impact of social relationships on competitive social capital and SME performance in a complex, globalized business environment.

2.2. Knowledge Donating

Knowledge donation involves sharing knowledge, information, skills, experience, or resources without expecting direct financial compensation (Bratianu, 2015). It promotes a collaborative mindset for personal improvement, community development, and healthy relationships (Obrenovic et al., 2020). Key indicators in this study for knowledge donation include:

1. Understanding of Collaborative Advantage: Recognizing that sharing knowledge fosters collaborative relationships and mutual growth.
2. Ability to Network: Building valuable connections for broader perspectives and opportunities.
3. Willingness to Share Resources: A disposition to selflessly contribute knowledge, information, time, or skills.
4. Effective Communication Skills: The ability to communicate knowledge coherently and compellingly.
5. Understanding of Community Needs: Comprehending community challenges and tailoring knowledge donation to provide valuable solutions.

Knowledge donation cultivates a positive reputation, strengthens social capital, and enhances performance across various domains. It's about more than sharing facts; it's about building relationships and fostering cooperation within a group or organization.

2.3. Knowledge Collecting

Knowledge collection involves acquiring and aggregating knowledge, information, data, or resources from diverse sources (Abubakar et al., 2019). The goal is to enhance understanding, proficiency, and adaptability by accessing knowledge beyond one's immediate environment. In business and personal growth, knowledge acquisition

means continually seeking and retrieving relevant information from various outlets, such as publications, research, workshops, and interactions within the industry or community. Key indicators in this study for knowledge collection include:

1. Understanding the Industry and Market: Comprehending industry dynamics, market trends, and customer demands.
2. Ability to Gather Information: Proficiency in searching, organizing, and accessing data from various sources.
3. Understanding Technology and Innovation: Understanding technological advancements and innovations to stay connected and seize opportunities.
4. Ability to Establish Relationships: Establishing connections with knowledgeable individuals or institutions for expanded networks and specialized information.
5. Willingness to Learn and Evolve: A mindset focused on continuous learning and personal growth in a rapidly changing environment.

Knowledge collection is essential for identifying opportunities, overcoming challenges, making informed decisions, acquiring new skills, expanding social connections, and advancing in various domains, including business, academia, and personal growth.

2.4. Competitive Social Capital

Competitive social capital refers to an individual or organization's network of social connections that can provide a competitive advantage in a business context (Liu, 2017). It focuses on the quality and depth of these connections, granting access to resources, information, and opportunities that may be otherwise inaccessible. Competitive social capital involves strategically using social networks to achieve corporate objectives, expand, and improve overall performance (Xie et al., 2021). This study employs several measures to explain competitive social capital, including:

1. Engagement in Business Networks: Building and maintaining strong relationships with industry stakeholders, facilitating learning, expanding customer bases, and forming partnerships.
2. Leadership Skills: Effective leadership influences network members' decisions and outcomes, fostering a positive public image, committed team members, and successful collaborations.
3. Understanding of Local Culture: Awareness of cultural dynamics aids in building enduring and mutually beneficial connections, avoiding misinterpretations, and fostering stronger interpersonal relationships.
4. Community Relations: A positive association with the local community can influence an individual or organization's reputation, achieved through knowledge sharing, social services, or philanthropic contributions.
5. Effective Communication Skills: Proficiency in conveying ideas, persuading others, and active listening enhances interpersonal connections and information flow.

In today's complex, globalized business landscape, competitive social capital is a valuable

resource. Establishing strong, mutually beneficial connections within social networks provides improved access to opportunities, information, and resources, significantly impacting the performance and success of individuals and organizations in competitive economic environments (Ahlquist & Downey, 2023).

2.5. SMEs Performance

SME performance assesses the achievements of small and medium-sized enterprises across various dimensions (Rodrigues et al., 2021). It encompasses financial and operational indicators, as well as the business's impact on the environment and society (Ausat, Widayani, et al., 2022). Key performance indicators in this study include:

1. Sales Turnover: Measures total revenue from product or service exchanges, reflecting market success.
2. Profit: Evaluates net revenue after expenses, indicating cost control and sales effectiveness.
3. Growth Rate: Considers revenue, customer base expansion, and market penetration, showing business strategy effectiveness.
4. Market Share: Quantifies market presence in a specific industry or segment, illustrating competitiveness.
5. Market Share: Gauges meeting customer needs, affecting retention and referrals.
6. Customer Satisfaction: Gauges meeting customer needs, affecting retention and referrals.
7. Innovation: Reflects the capacity to introduce novel products, services, or approaches.
8. Cost Efficiency: Assesses operational cost management without compromising quality.
9. Sustainability Level: Measures environmental and social responsibility practices, indicating long-term sustainability.

SME performance is crucial for evaluating the success and impact of these enterprises, offering insights for business owners and stakeholders to identify strengths, opportunities, and areas for improvement.

2.6. The Relationship Between Variables

Knowledge sharing involves transferring knowledge from one person to another (Dysvik et al., 2015). Knowledge donating is when SME owners actively communicate with colleagues, although resistance can occur due to factors like reluctance to change or not recognizing the benefits (Dube & Ngulube, 2012). Knowledge donating positively impacts SMEs' competitive social capital, which involves mobilizing resources through strong social relationships and networks (Kim et al., 2020). Actively participating in knowledge donation activities can help SMEs expand their social networks and access resources like capital, materials, and new markets. However, the impact of knowledge donating also depends on SMEs' ability to manage and utilize the knowledge effectively, requiring adequate managerial capabilities and resources. The study's hypotheses are as follows:

Hypothesis 1: Knowledge donating has a significant effect on Competitive Social Capital

SME actors often view their professional experience as personal wealth and a competitive advantage (Akhavan et

al., 2012). Knowledge sharing can be divided into knowledge donation and knowledge acquisition (van den Hooff & de Ridder, 2004). Knowledge collection involves encouraging fellow members to share their knowledge. However, tangible rewards may not be effective for SME owners driven by intrinsic motivation. Knowledge collection aids SMEs in decision-making and building wider networks with customers, suppliers, and partners. Strengthening relationships with these stakeholders enhances access to resources and information, improving business performance (Ausat & Peiraisal, 2021). In summary, knowledge collection boosts SMEs' competitive social capital and overall performance. The study's hypotheses are as follows:

Hypothesis 2: Knowledge collecting has a significant effect on Competitive Social Capital

A performance measurement system is crucial for SMEs as it provides essential information to set, control, and achieve their goals (Leyla & Judit, 2018). Strong social relationships with other businesses help SMEs stay informed about market trends and needs, enabling more informed decision-making (Dwivedi et al., 2021). Furthermore, these relationships grant access to diverse resources like raw materials, technology, and capital (Ridwan Maksun et al., 2020). Additionally, fostering good social relations among peers in the same sector can enhance brand reputation and market competitiveness (Marolt et al., 2022). In summary, competitive social capital positively impacts SME performance by expanding access to information and resources while enhancing brand reputation and market competitiveness. Therefore, SME owners should prioritize building strong and mutually beneficial social relationships with other business actors. The study's hypotheses are as follows:

Hypothesis 3: Competitive social capital has a significant effect on the performance of SMEs

Knowledge donation and innovation are vital for organizational success and competitiveness. Product and process innovation significantly impact business success. Knowledge donating enhances organizational performance (Mohsen Allameh et al., 2014). It also improves innovation and competitive advantage, especially for technology-driven companies (M. J. Lin & Chen, 2008). In this context, knowledge donating involves Batik SMEs in Central Java sharing knowledge and experience with various stakeholders, including customers, suppliers, and the local business community. This practice enhances innovation and creativity, as feedback and suggestions from others help in developing new ideas and improving products or services. This, in turn, can boost Batik SMEs' performance, including expansion, profitability, and customer satisfaction. It's crucial to note that the impact of knowledge donation depends on SMEs' ability to effectively manage and utilize the acquired knowledge. Therefore, Batik SMEs in Central Java must possess adequate managerial skills and resources to make the most of their knowledge and experience. The study's hypotheses are as follows:

Hypothesis 4: Knowledge donating has a significant effect on SME performance

Knowledge collecting can help businesses to gain new knowledge about batik products, the latest fashion trends,

and more efficient production technologies and techniques (Raya et al., 2021). In addition, by understanding market trends and demands, businesses can produce products that are more relevant and attractive to their customers (Farida & Setiawan, 2022). Businesses should take appropriate actions based on the knowledge they acquire, such as improving labor skills or adopting new technologies. That is, knowledge collecting can help Batik businesses in Central Java to improve their performance and competitiveness in the market. The hypotheses proposed in this study are as follows:

Hypothesis 5: Knowledge collecting has a significant effect on the performance of SMEs

3. RESEARCH METHODOLOGY

This study employs quantitative methodology to gather numerical and statistical data based on empirical, objective, measurable, rational, and systematic approaches (Igwenagu, 2016). It focuses on knowledge donation, knowledge collection, competitive social capital, and SME performance. The study uses social capital theory to understand how knowledge sharing, gathering, and relationship building can influence competitive social capital and firm performance, especially for SMEs. These constructs can help SMEs in Central Java enhance consumer interest and adapt to evolving business concepts. This is achieved through active participation in business group discussions and the implementation of knowledge donation and collection.

The study focuses on SMEs in Central Java, particularly in districts/cities like Semarang, Pekalongan, Solo, Kudus, and Pati. The sample size of 176 respondents was determined to represent the batik-producing SMEs in proportion to their presence in each region. The research examines the impact of knowledge donation and acquisition on competitive social capital and performance. To calculate the sample size, we used a formula suggested by (Ferdinand, 2005), which ranges from 5 to 10 times the number of indicators. With 23 indicators, the sample size could range from a minimum of 115 to a maximum of 230 respondents. After data validation and selection, 156 respondents were eligible for analysis, meeting the required range of sample size.

An online Likert-scale survey was conducted among Batik SMEs in 5 districts from April to May 2023, resulting in 187 initial respondents. After excluding 31 respondents who did not meet the study's requirements, the final sample size was 156 SMEs. Table 1 provides an overview of the surveyed SMEs' characteristics. The study employed the Partial Least Square Structural Equation Model (PLS-SEM) as it can effectively handle complex models with multiple constructs and reflective indicators, known for its causal-predictive capabilities (Hair et al., 2019). The PLS-SEM analysis involved two stages: confirmatory factor analysis (CFA) and structural path analysis models (Hair et al., 2012), using Smart-PLS version 4 (Hair et al., 2021).

Table 1. SMEs Criteria

Enterprises Scale	Asset	Onset	Number of Employees
Small Enterprises	>Rp 50–Rp500 million	>Rp 300 million–Rp2,5 billion	5-19 people
Medium Enterprises	>Rp 500 million–Rp10 billion	>Rp 2,5 billion–50 billion	20-99 people

4. RESULTS

4.1. Outer Model Evaluation

Confirmatory factor analysis (CFA) in this study is used to evaluate the outer model with reflective indicators (Hair et al., 2012), i.e. the indicators reflect the constructs they measure (Coltman et al., 2008). CFA testing includes three stages: convergent validity, construct reliability, and discriminant validity. Convergent validity refers to the extent to which the reflective indicators tested correlate strongly and contribute to the construct being measured. Convergent validity is tested through factor loading assessment. The calculation results in Table 2 show that

the construct indicators have a loading factor value of at least 0.710 and meet the minimum limit of 0.7 (Chin, 2010). By the statement of (Hair et al., 2021), the loading factor value above 0.7 indicates good convergent validity. Construct reliability testing is intended to see the internal consistency of the measuring instrument. Construct reliability in this study was tested using Cronbach alpha above 0.7 (Nunnally, 1994), composite reliability > 0.7, and average variance extracted (AVE) > 0.5 (Hair et al., 2019). The results of testing the reliability of the construct in Table 2 obtained Cronbach Alpha, Construct Reliability, and AVE have been above the cut-off value so that they have met the reliability criteria (Hair et al., 2011).

Table 2. Outer Model Evaluation

Indicator Variables & Items	Code	Factor Loadings	Cronbach's Alpha	Composite Reliability	(AVE)
Knowledge Donating					
Understanding of Collaborative Advantage	KD1	0,761	0,819	0,873	0,579
Ability to Network	KD2	0,797			
Willingness to Share Resources	KD3	0,766			
Effective Communication Skills	KD4	0,736			
Understanding of Community Needs	KD5	0,745			
Knowledge Collecting					
Understanding of Industry and Market	KC1	0,714			

Ability to Gather Information	KC2	0,745			
Understanding of Technology and Innovation	KC3	0,801	0,802	0,860	0,552
Ability to Establish Relationships	KC4	0,722			
Willingness to Learn and Grow	KC5	0,729			
Competitive Social Capital					
Engagement in Business Networking	CSC1	0,864			
Leadership Skills	CSC2	0,739			
Understanding of Local Culture	CSC3	0,860	0,895	0,922	0,705
Community Relationships	CSC4	0,854			
Effective Communication Skills	CSC5	0,872			
SMEs Performance					
Sales turnover	SP1	0,753			
Profit	SP2	0,798			
Growth rate	SP3	0,789			
Market share	SP4	0,734	0,891	0,913	0,568
Customer satisfaction	SP5	0,796			
Cost efficiency	SP6	0,709			
Innovation	SP7	0,714			
Sustainability level	SP8	0,730			

Discriminant validity testing is intended to validate that reflective indicators differ from each other and reflect the construct being measured (Ab Hamid et al., 2017). Discriminant validity is measured by applying two criteria, namely the heterotrait-monotrait ratio (HTMT) (Henseler et al., 2015) and the Fornell-Larcker criterion (Hair et al., 2012). The square root of the AVE should be higher than the correlation between one construct and

other construct items. Output in the discriminant of this study (Hair et al., 2011). Based on Table 3 on discriminant validity, the HTMT value is smaller than 0.90, which means it meets the recommended requirements (Henseler et al., 2015). Further results explain the square root of the AVE on the diagonal line is greater than the correlation between the constructs, which means that this research model has fulfilled discriminant validity (Hair et al., 2019).

Table 3. Discriminant Validity

Constructs	KD	KC	CSC	SP
Knowledge Donating (KD)	0,761	0,754	0,531	0,558
Knowledge Collecting (KC)	0,629	0,743	0,476	0,565
Competitive Social Capital (CSC)	0,467	0,457	0,839	0,564
SME Performance (SP)	0,482	0,496	0,515	0,754

4.2. Inner Model Evaluation

Confirmatory factor analysis (CFA) results confirmed that construct validity and reliability had been met. Therefore,

the analysis continued with the structural model to analyze the causal relationship. The calculation results are graphically described in Figure 1.

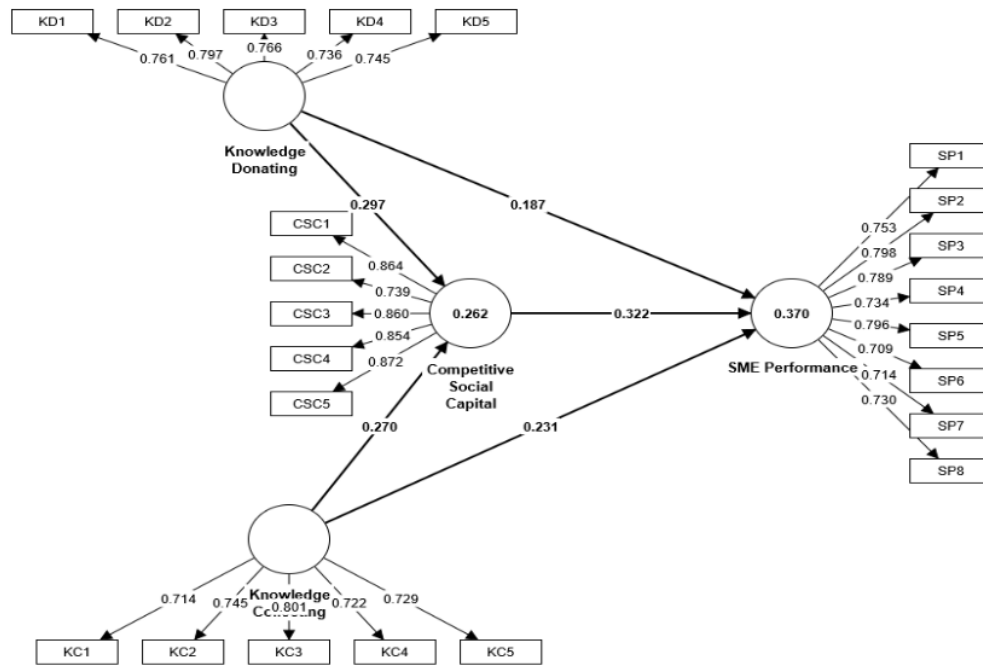


Figure 1: Causality Relationship of PLS-SEM Research

This study first looked at whether there was collinearity between variables as one of the requirements of variance-based structural equation modeling. The $VIF < 3$ approach is used for vertical and lateral collinearity assessment in PLS-SEM. The test results in Table 4 obtained the largest

VIF value is 2.729 still below 3 so there is no evidence of collinearity (Hair et al., 2021). Furthermore, the causal relationship between the model construction in the study is explained by the coefficient of determination (R^2) shown in Table 5.

Table 4. Collinearity Testing

Variables	Indicators	VIF
Knowledge Donating	KD1 ... KD5	1.550 ... 2.617
Knowledge Collecting	KC1 ... KC5	1.269 ... 2.379
Competitive Social Capital	CSC1 ... CSC5	1.774 ... 2.729
SME Performance	SP1 ... SP8	1.655 ... 2.252

Table 5. Coefficient of determination (R^2)

Variable	R-square	R-square adjusted
Competitive Social Capital	0,278	0,253
SMEs Performance	0,370	0,358

23

Based on Table 5, it is known that the R^2 value is 0.278, which means that the variance explained in the competitive social capital construct is 27.8%. The next R^2 value is 0.370, indicating the ability of knowledge donating, knowledge collecting, and competitive social

capital in explaining the performance of SMEs by 37.0%, including medium criteria (Chin, 1998). Similarly, the results of the f-square calculation in Table 6 show a medium effect size with a value of $f^2 < 0.15$ (Cohen, 2013).

Table 6. F-Square

Factor	Competitive Social Capital	SME Performance
Knowledge Donating	0,072	0,031
Knowledge Collecting	0,060	0,048
Competitive Social Capital		0,121

PLS-SEM analysis uses various measures of model fit for PLS-SEM including Standardised Root Mean Square

Residual (SRMR), and Normed Fit Index (NFI). The cut-off value of these criteria is with a threshold of $SRMR < 0.08$

and NFI >0.90 (Schuberth et al., 2018). However, the NFI measure is not absolute so the value below is still acceptable (Dash & Paul, 2021). The calculation results as shown in Table 7 show that the SRMR value of 0.078 <0.08

and NFI of 0.776 is close to 0.9, indicating that the structural model fits the empirical data (Dash & Paul, 2021).

Table 7. Model Fit

No	Criteria	Saturated Model
1	SRMR	0,078
2	NFI	0,776

This study uses the Bootstrapping method, which is a nonparametric procedure for path coefficients and tests the statistical significance of various path analyses (Hair et al., 2021). In the calculation, the sample in this study was repeated to a large number of 5,000 to ensure the stability of the results. The calculation results are shown in Table 8. Based on the calculation results, it is known

that the effect of knowledge donating on competitive social capital has a positive estimate of 0.297, a statistical t-value of 3.565 >1.96, and a p-value of 0.000 <0.05. Based on this value, H1 is accepted. Similarly, the results of testing H2, H3, H4, and H5 in Table 8 also show a positive relationship with a t-value/statistic above 1.96, or p-values below 0.05 so that it can be declared accepted.

Table 8. Direct Effect

Relationship	Path Coefficient	T-statistics	P-values	Decision
Knowledge Donating -> Competitive Social Capital	0,297	3,565	0,000	H1 Accepted
Knowledge Collecting -> Competitive Social Capital	0,270	2,888	0,004	H2 Accepted
Knowledge Donating -> SME Performance	0,187	2,491	0,013	H3 Accepted
Knowledge Collecting -> SME Performance	0,231	2,806	0,005	H4 Accepted
Competitive Social Capital -> SME Performance	0,322	3,965	0,000	H5 Accepted

The results of the PLS-SEM algorithm and the bootstrap procedure also obtained the indirect effect value as a test of the mediation role. Smart-PLS results on

the indirect effect in Table 9 obtained a p-value below the cut-off of 0.05.

Table 9. Indirect Effect

Indirect Relationship	Path Coefficient	T-statistics	P values
Knowledge Donating -> Competitive Social Capital -> SME Performance	0,096	2,606	0,009
Knowledge Collecting -> Competitive Social Capital -> SME Performance	0,087	2,338	0,019

5. DISCUSSION

The author will discuss Tables 8 and 9's research calculations in this paragraph. The findings in these tables are crucial to this study's generalisation and authenticity. The first hypothesis suggests that knowledge donation boosts competitive social capital significantly. This supports prior findings that these two factors are closely related (Tran Pham, 2022). Competitive social capital is the ability to use social networks to achieve competitive goals (Kussudyarsana et al., 2023). This boosts Central Java Batik SMEs' social network value. SMEs build beneficial social networks by sharing knowledge and skills with other entrepreneurs. SME contributions of accurate and relevant information make them a trusted source for network members. It boosts the SME's network value, influence, and access to possibilities that might not have emerged otherwise. Knowledge donation also helps SMEs establish expertise. Community members recognise SMEs who continuously give important and in-depth information. This expert status allows for collaboration, idea sharing, and field-related activities. Knowledge donation significantly boosts SMEs' competitive social capital (Setini et al., 2021). Knowledge donation is linked to competitive social capital, according to social capital theory. Social capital theory emphasises the value of

interpersonal connections and social networks for support, knowledge, and opportunity (Bhandari & Yasunobu, 2009). Strong social connections, trust, reputation, and access to information or opportunities are linked. Knowledge donation is crucial to building, improving, and optimising competitive social capital in this cycle. Knowledge sharing strengthens social networks and provides personal rewards. Thus, knowledge donation is linked to competitive social capital in social capital theory.

Knowledge collecting increases competitive social capital. Use of social networks to attain competitive aims is competitive social capital. This study supports prior findings (Mayasari & Chandra, 2020). By actively seeking information, Central Java SMEs may develop their skills. This atmosphere allows learning through reading, researching, conferences, and expert interviews. The subject's breadth and depth allow for useful contributions in various competitive contexts. SMEs also appreciate knowledge acquisition for analytical and problem-solving skills. Subject matter experts (SMEs) acquire complex data from many sources to assess and synthesise it. In competitive settings requiring quick decisions, this competency is crucial. Knowledge acquisition increases competitive social capital (Hilmawati et al., 2023). This technique increases SMEs' analytical and knowledge

skills. It also builds beneficial networks, boosts social worth, and builds credibility to promote competitiveness. Knowledge and competitive social capital are related, says social capital theory. Social capital highlights how social interactions and networks help organisations gain resources, information, and opportunities (Seibert et al., 2001). This theory states that knowledge collection promotes social networks, information, support, and collaboration. Competitive social capital increases access to firm-supporting resources and opportunities. Knowledge acquisition is linked to competitive social capital acquisition, says social capital theory.

The third hypothesis posits that there exists a statistically significant and positive correlation between knowledge donation and the performance of SMEs. This discovery aligns with previous research that presents analogous findings (Wuryaningrat, 2013). One plausible rationale for this observation is that SMEs have recognized the potential benefits of knowledge and experience sharing, as it can catalyze fostering innovation and creativity inside their organizations. The act of knowledge donation can result in the acquisition of novel information and perspectives, which in turn can foster innovative thinking, uncover untapped possibilities, and facilitate the generation of inventive resolutions to business-related obstacles. These technological advancements possess the capacity to enhance competitiveness and confer a competitive edge. Furthermore, the dissemination of knowledge through knowledge donation can contribute to the enhancement of the quality of products and services offered by SMEs. Access to knowledge regarding best practices, cutting-edge technology, and impactful marketing tactics can significantly enhance the ability of SMEs to enhance the value proposition they offer to their clients. Better quality can strengthen a business's reputation and expand market share. Knowledge donation has a positive and significant influence on the performance of Small and Medium Enterprises (Samir, 2020). From the perspective of social capital theory, there is a significant correlation between knowledge donation and SME performance. The social capital theory highlights how social relationships and networks influence business performance. In the findings of this hypothesis, knowledge donating serves as a mechanism to build strong social networks, enhance reputation, gain access to information and opportunities, and increase collaboration in the business environment. All of these have an impact on improving SME performance. Therefore, there is a strong correlation between knowledge donation and SME performance from the perspective of social capital theory.

The fourth hypothesis calculation shows that knowledge collecting improves SMEs' performance. Previous studies found comparable results (Setiyono et al., 2022). This may be because Batik SMEs in Central Java realised that actively acquiring knowledge from numerous sources helps increase and enrich their knowledge base. SME owners and managers may make better decisions with more detailed and diverse knowledge. Information on industry trends, best practises, and market shifts can improve corporate plans. Knowledge collection also promotes analytical skills. SMEs can learn business analysis by reviewing and synthesising information from diverse sources. This helps

identify opportunities and obstacles and create successful company action plans. Knowledge acquisition boosts SME performance (Sijabat, 2022). According to social capital theory, knowledge collection improves decision-making, innovation, social networks, and information gathering. All of these help SMEs overcome business obstacles and seize opportunities. Social capital theory shows a strong link between knowledge gathering and SME performance.

The fifth hypothesis suggests that competitive social capital improves SMEs' performance significantly. This reflects recent findings that these two variables are closely related (Ozigi, 2018). This may be because batik SMEs in Central Java have realised that a robust and diverse social network may provide resources and information they cannot get alone. Access to industry expertise, market trends, business possibilities, and growth tools is also available through extensive networks. Strong social networks enable industry collaboration and partnerships. Business partners may help SMEs extend their reach, develop collaborative products, and enter new markets by sharing ideas, knowledge, and resources. Competitive social capital can also assist SMEs gain a good reputation in business. Good relationships with company partners, consumers, and other stakeholders boost business image and trust. Having a good reputation can attract and retain customers (Subagja et al., 2023). Competitive social capital improves SME performance significantly (Rahmawati et al., 2021).

The indirect impact calculation in Table 9 shows that competitive social capital can mediate the causal association between knowledge-donating and knowledge-collecting and SME performance. Competitive social capital links knowledge donation and collection to SME performance. Strong competitive social capital allows SMEs to use their social networks to get the resources, information, and support they need to succeed (Ausat et al., 2023). This study uses complementary mediation. Thus, this study illuminates how these factors combine to affect Batik SMEs in Semarang, Solo, Pati, Kudus, and Pekalongan.

6. CONCLUSION

Knowledge donating and knowledge collecting have a positive and significant influence on competitive social capital and the performance of Batik SMEs in Central Java. Both knowledge donating and knowledge collecting play an important role in building and utilizing a strong social network, which in turn has a positive impact on SMEs' performance. In a competitive and dynamic business era, the ability to share knowledge and gather information from various sources becomes a key factor in achieving success in small and medium-sized businesses. Knowledge donating and knowledge collecting has an integral role in forming strong competitive social capital and improving SME performance. This condition has been realized by 156 Batik SMEs in Central Java. In addition, competitive social capital can mediate the causal relationship between the constructs of knowledge donating and knowledge collecting with the construct of SME performance. This means that competitive social capital acts as a connecting mechanism between increasing knowledge donating and knowledge collecting and improving SME performance. The correlation between knowledge donating, knowledge collecting,

competitive social capital, and SME performance in the perspective of social capital theory shows how interaction and utilization of strong social networks can influence business success. The development of positive relationships, the enhancement of knowledge through interaction, and the utilization of networks for competitive purposes, all form an ecosystem that influences how SMEs achieve their business goals in a complex environment.

The limitation of this study is that respondents only came from the districts/cities of Semarang, Pekalongan, Solo, Kudus, and Pati using purposive sampling. Central Java Province consists of 29 regencies and 6 cities. Therefore, future researchers who have an interest in knowledge donating and knowledge collecting and the importance of discussing aspects of competitive social capital are advised to enlarge the sample area so that these findings can be more generalized. Future research also needs to involve factors such as knowledge management so that entrepreneurs can map the knowledge gained from social interactions carefully and ideally for the survival of their business, especially during a crisis.

The results of this study are important. Batik SMEs in Central Java need to improve knowledge exchange and social networks to enhance performance. Entrepreneurs and business owners should realise the importance of information exchange and social networks in business success, encouraging investment in knowledge management. The government needs to support the SME environment with knowledge exchange, networking, and capacity building. Further research is needed to understand the relationship between information exchange, social capital and SME success. Industry and support organisations can assist SMEs in knowledge sharing and collaboration. Investors and financial institutions should consider competitive social capital in the assessment of investments or loans for SMEs. In conclusion, stakeholders can use knowledge exchange, social capital, and SME performance to support SME Batik success in Central Java and other regions. Extending research and initiatives to new locations and aspects may improve the understanding of these processes.

REFERENCES

1. Ab Hamid, M. R., Sami, W., & Mohmad Sidek, M. H. (2017). Discriminant Validity Assessment: Use of Fornell & Larcker criterion versus HTMT Criterion. *Journal of Physics: Conference Series*, 890, 012163. <https://doi.org/10.1088/1742-6596/890/1/012163>
2. Abubakar, A. M., Elrehail, H., Alatailat, M. A., & Elçi, A. (2019). Knowledge management, decision-making style, and organizational performance. *Journal of Innovation & Knowledge*, 4(2), 104–114. <https://doi.org/10.1016/j.jik.2017.07.003>
3. Abdiat, A. (2022, October 11). *Indonesia has the most MSMEs in ASEAN, how is its competitiveness? DATABOKS*. <https://databoks.katadata.co.id/datapublish/2022/10/11/indonesia-punya-umkm-terbanyak-di-asean-bagaimana-daya-saingnya>
4. Ahlquist, J. S., & Downey, M. (2023). The Effects of Import Competition on Unionization. *American Economic Journal: Economic Policy*, 15(4), 359–389. <https://doi.org/10.1257/pol.20200709>
5. Ahmad, F., & Karim, M. (2019). Impacts of knowledge sharing: a review and directions for future research. *Journal of Workplace Learning*, 31(3), 207–230. <https://doi.org/10.1108/JWL-07-2018-0096>
6. Akhavan, P., Ghajavand, S., & Abdali, R. (2012). Knowledge Sharing and its Impact on Knowledge Creation. *Journal of Information & Knowledge Management*, 11(02), 1250012. <https://doi.org/10.1142/S0219649212500128>
7. Alyafie, A., & Al-Mubarak, M. (2016). Challenges of Going Global for SMEs. *International Journal of Innovation and Knowledge Management in the Middle East and North Africa*, 5(1), 1–11.
8. Aghion, P., Bergeaud, A., & Van Reenen, J. (2023). The Impact of Regulation on Innovation. *American Economic Review*, 113(11), 2894–2936. <https://doi.org/10.1257/aer.20210107>
9. Annamalah, S., Paraman, P., Ahmed, S., Dass, R., Sentosa, I., Pertheban, T. R., Shamsudin, F., Kadir, B., Aravindan, K. L., Raman, M., Hoo, W. C., & Singh, P. (2023). The role of open innovation and a normalizing mechanism of social capital in the tourism industry. *Journal of Open Innovation: Technology, Market, and Complexity*, 9(2), 100056. <https://doi.org/10.1016/j.joitmc.2023.100056>
10. Ausat, A. M. A., Al Bana, T., & Gadzali, S. S. (2023). Basic Capital of Creative Economy: The Role of Intellectual, Social, Cultural, and Institutional Capital. *Apollo: Journal of Tourism and Business*, 1(2), 42–54. <https://doi.org/10.58905/apollo.v1i2.21>
11. Ausat, A. M. A., & Peirisal, T. (2021). Determinants of E-commerce Adoption on Business Performance: A Study of MSMEs in Malang City, Indonesia. *Journal On Optimizations Of Systems At Industries*, 20(2), 104–114.
12. Ausat, A. M. A., & Suherlan, S. (2021). Obstacles and Solutions of MSMEs in Electronic Commerce during Covid-19 Pandemic: Evidence from Indonesia. *BASKARA: Journal of Business and Entrepreneurship*, 4(1), 11–19. <https://doi.org/10.54268/BASKARA.4.1.11-19>
13. Ausat, A. M. A., Suherlan, S., Peirisal, T., & Hirawan, Z. (2022). The Effect of Transformational Leadership on Organizational Commitment and Work Performance. *Journal of Leadership in Organizations*, 4(4), 61–82. <https://doi.org/10.22146/jlo.71846>
14. Ausat, A. M. A., Widayani, A., Rachmawati, I., Latifah, N., & Suherlan, S. (2022). The Effect of Intellectual Capital and Innovative Work Behavior on Business Performance. *Journal of Economics, Business, & Accountancy Ventura*, 24(3), 363–378. <https://doi.org/10.14414/jebav.24i3.2809>
15. Bhandari, H., & Yasunobu, K. (2009). What is Social Capital? A Comprehensive Review of the Concept. *Asian Journal of Social Science*, 37(3), 480–510. <https://doi.org/10.1163/156853109X436847>
16. Bourdieu, P., Coleman, J. S., & Coleman, Z. W. (1992). *Social Theory for a Changing Society* (P. Bourdieu & J. S. Coleman, Eds.; 1st ed.). Routledge. <https://doi.org/10.4324/9780429306440>
17. Bratianu, C. (2015). Knowledge Sharing and Communities of Practice. In *Organizational Knowledge Dynamics: Managing Knowledge Creation, Acquisition, Sharing, and Transformation* (Vol. 11, pp. 259–285). Hershey: IGI Global. <https://doi.org/10.4018/978-1-4666-8318-1.ch011>

18. Cenamor, J., Parida, V., & Wincent, J. (2019). How entrepreneurial SMEs compete through digital platforms: The roles of digital platform capability, network capability, and ambidexterity. *Journal of Business Research*, *100*, 196–206. <https://doi.org/10.1016/j.jbusres.2019.03.035>
19. Chen, C., Habib, A., & Zhu, X. (2023). Finance, Managerial Inputs, and Misallocation. *American Economic Review: Insights*, *5*(3), 409–426.
20. Chin, W. W. (2010). How to Write Up and Report PLS Analyses. In *Handbook of Partial Least Squares* (pp. 655–690). Springer Berlin Heidelberg. https://doi.org/10.1007/978-3-540-32827-8_29
21. Cohen, J. (2013). *Statistical Power Analysis for the Behavioral Sciences* (2nd ed.). Routledge. <https://doi.org/10.4324/9780203771587>
22. Coltman, T., Devinney, T. M., Midgley, D. F., & Venaik, S. (2008). Formative versus reflective measurement models: Two applications of formative measurement. *Journal of Business Research*, *61*(12), 1250–1262.
23. Dash, G., & Paul, J. (2021). CB-SEM vs PLS-SEM methods for research in social sciences and technology forecasting. *Technological Forecasting and Social Change*, *173*, 121092. <https://doi.org/10.1016/j.techfore.2021.121092>
24. Dube, L., & Ngulube, P. (2012). Knowledge sharing in a multicultural environment: challenges and opportunities. *South African Journal of Libraries and Information Science*, *78*(1), 68–77. <https://doi.org/10.7553/78-1-48>
25. Dwivedi, Y. K., Ismagilova, E., Hughes, D. L., Carlson, J., Filieri, R., Jacobson, J., Jain, V., Karjaluoto, H., Kefi, H., Krishen, A. S., Kumar, V., Rahman, M. M., Raman, R., Rauschnabel, P. A., Rowley, J., Salo, J., Tran, G. A., & Wang, Y. (2021). Setting the future of digital and social media marketing research: Perspectives and research propositions. *International Journal of Information Management*, *59*, 102168. <https://doi.org/10.1016/j.ijinfomgt.2020.102168>
26. Dysvik, A., Buch, R., & Kuvaas, B. (2015). Knowledge donating and knowledge collecting. *Leadership & Organization Development Journal*, *36*(1), 35–53. <https://doi.org/10.1108/LODJ-11-2012-0145>
27. Farida, I., & Setiawan, D. (2022). Business Strategies and Competitive Advantage: The Role of Performance and Innovation. *Journal of Open Innovation: Technology, Market, and Complexity*, *8*(3), 1–16. <https://doi.org/10.3390/joitmc8030163>
28. Fayyaz, A., Chaudhry, B. N., & Fiaz, M. (2021). Upholding Knowledge Sharing for Organization Innovation Efficiency in Pakistan. *Journal of Open Innovation: Technology, Market, and Complexity*, *7*(1), 4.
29. Ferdinand, A. T. (2005). *Metode Penelitian Manajemen* (2nd ed.). Badan Penerbit Universitas Diponegoro
30. Fu, X., Fu, X. (Maggie), Ghauri, P., & Hou, J. (2022). International collaboration and innovation: Evidence from a leading Chinese multinational enterprise. *Journal of World Business*, *57*(4), 101329. <https://doi.org/10.1016/j.jwb.2022.101329>
31. Hair, J. F., Hult, G. T. M., Ringle, C. M., Sarstedt, M., Danks, N. P., & Ray, S. (2021). *Partial Least Squares Structural Equation Modeling (PLS-SEM) Using R* (3rd ed.). Springer International Publishing. <https://doi.org/10.1007/978-3-030-80519-7>
32. Hair, J. F., Risher, J. J., Sarstedt, M., & Ringle, C. M. (2019). When to use and how to report the results of PLS-SEM. *European Business Review*, *31*(1), 2–24. <https://doi.org/10.1108/EBR-11-2018-0203>
33. Hair, J. F., Sarstedt, M., Ringle, C. M., & Mena, J. A. (2011). An assessment of the use of partial least squares structural equation modeling in marketing research. *Journal of the Academy of Marketing Science*, *40*(3), 414–433. <https://doi.org/10.1007/S11747-011-0261-6>
34. Hair, J. F., Sarstedt, M., Ringle, C. M., & Mena, J. A. (2012). An assessment of the use of partial least squares structural equation modeling in marketing research. *Journal of the Academy of Marketing Science*, *40*(3), 414–433. <https://doi.org/10.1007/s11747-011-0261-6>
35. He, Q., Meadows, M., Angwin, D., Gomes, E., & Child, J. (2020). Strategic Alliance Research in the Era of Digital Transformation: Perspectives on Future Research. *British Journal of Management*, *31*(3), 589–617.
36. Henseler, J., Ringle, C. M., & Sarstedt, M. (2015). A new criterion for assessing discriminant validity in variance-based structural equation modeling. *Journal of the Academy of Marketing Science*, *43*(1), 115–135. <https://doi.org/10.1007/s11747-014-0403-8>
37. Hermita, H., Surya, B., Perwira, I., Abubakar, H., & Idris, M. (2021). Economic Business Sustainability and Strengthening Human Resource Capacity Based on Increasing the Productivity of Small and Medium Enterprises (SMEs) in Makassar City, Indonesia. *Sustainability*, *13*(6), 3177.
38. Hilawati, R. S., Samsir, S., Daulay, I. N., & Siregar, P. A. (2023). The Effect of Information Sharing, Knowledge Sharing, and Social Capital on Business Performance Mediated by Innovation (Study on Small Food Industry in Pekanbaru City). *Indonesian Journal of Economics, Social, and Humanities*, *5*(1), 65–84. <https://doi.org/10.31258/ijesh.5.1.65-84>
39. Igwenagu, C. (2016). *Fundamentals of Research Methodology and Data Collection*. LAP Lambert Academic Publishing. <https://www.researchgate.net/publication/303381524>
40. Kamar, K., Lewaherilla, N. C., Ausat, A. M. A., Ukari, K., & Gadzali, S. S. (2022). The Influence of Information Technology and Human Resource Management Capabilities on SMEs Performance. *International Journal of Artificial Intelligence Research*, *6*(1.2), 1. <https://doi.org/https://doi.org/10.29099/ijair.v6i1.2.676>
41. Kamaşak, R., & Bulutlar, F. (2010). The influence of knowledge sharing on innovation. *European Business Review*, *22*(3), 306–317. <https://doi.org/10.1108/09555341011040994>
42. Kim, J., Kang, S., & Lee, K. H. (2020). How social capital impacts the purchase intention of sustainable fashion products. *Journal of Business Research*, *117*, 596–603. <https://doi.org/10.1016/j.jbusres.2018.10.010>
43. Kossyva, D. I., Sarri, K. K., & Georgopoulos N. (2014). Co-opetition: A business strategy for SMEs in times of economic crisis. *South-Eastern Europe Journal of Economics*, *1*, 89–106.
44. Kussudyarsana, K., Maulana, H. K., Maimun, M. H., Santoso, B., & Nugroho, M. T. (2023). The Role of Social Capital, Innovation, and Capabilities on MSMEs' Resilience in Economic Hard Times. *Jurnal Manajemen Bisnis*, *14*(1), 72–89.
45. Leyla, M., & Judit, K. K. (2018). Defining The Performance Of Small And Medium Enterprises. *Network Intelligence Studies, Romanian Foundation for Business Intelligence, Editorial Department*, *6*(12), 111–120.
46. Lin, H., & Lee, G. (2005). Impact of organizational learning and knowledge management factors on e-business adoption. *Management Decision*, *43*(2), 171–188. <https://doi.org/10.1108/00251740510581902>
47. Lin, M. J., & Chen, C. J. (2008). *Integration and knowledge sharing: transforming to long-term competitive advantage*. *16*(1/2), 83–108.
48. Liu, C.-H. (2017). Creating competitive advantage: Linking perspectives of organization learning, innovation behavior, and intellectual capital. *International Journal of Hospitality Management*, *66*, 13–23. <https://doi.org/10.1016/j.ijhm.2017.06.013>

49. Marolt, M., Zimmermann, H.-D., & Pucihar, A. (2022). Social Media Use and Business Performance in SMEs: The Mediating Roles of Relational Social Commerce Capability and Competitive Advantage. *Sustainability*, 14(22), 15029. <https://doi.org/10.3390/su142215029>
50. Mayasari, Y., & Chandra, T. (2020). Social capital for the knowledge management system of the creative industry. *Journal of Enterprising Communities: People and Places in the Global Economy*, 14(4), 481–494. <https://doi.org/10.1108/JEC-01-2020-0008>
51. Meflinda, A., Mahyarni, M., Indrayani, H., & Wulandari, H. (2018). The effect of social capital and knowledge sharing on the small and medium enterprise's performance and sustainability strategies. *International Journal of Law and Management*, 60(4), 988–997. <https://doi.org/10.1108/IJLMA-03-2017-0073>
52. Mohsen Allameh, S., Khazaei Pool, J., Jaber, A., & Mazloomi Soveini, F. (2014). Developing a model for examining the effect of tacit and explicit knowledge sharing on organizational performance based on the EFQM approach. *Journal of Science & Technology Policy Management*, 5(3), 265–280.
53. Nahapiet, J., & Ghoshal, S. (1998). Social Capital, Intellectual Capital, and the Organizational Advantage. *The Academy of Management Review*, 23(2), 242–266. <https://doi.org/10.2307/259373>
54. Nunnally, J. (1994). *Psychometric theory* (3rd ed.). McGraw-Hill.
55. Obrenovic, B., Jianguo, D., Tsoy, D., Obrenovic, S., Khan, M. A. S., & Anwar, F. (2020). The Enjoyment of Knowledge Sharing: Impact of Altruism on Tacit Knowledge-Sharing Behavior. *Frontiers in Psychology*, 11, 1–16. <https://doi.org/10.3389/fpsyg.2020.01496>
56. Ozigi, O. (2018). Social Capital and Financial Performance of Small and Medium Scale Enterprises. *Journal of Advanced Research in Business and Management Studies*, 10(1), 18–27.
57. Phelps, C., Heidl, R., & Wadhwa, A. (2012). Knowledge, Networks, and Knowledge Networks. *Journal of Management*, 38(4), 1115–1166. <https://doi.org/10.1177/0149206311432640>
58. Prasanna, R., Jayasundara, J., Naradda Gamage, S. K., Ekanayake, E., Rajapakse, P., & Abeyrathne, G. (2019). Sustainability of SMEs in the Competition: A Systemic Review on Technological Challenges and SME Performance. *Journal of Open Innovation: Technology, Market, and Complexity*, 5(4), 100. <https://doi.org/10.3390/joitmc5040100>
59. Rahmawati, F., Rofiq, A., & Wijayanti, R. (2021). Community Social Capital and Firm Performance. *Journal of International Conference Proceedings*, 4(1), 219–229. <https://doi.org/10.32535/jicp.v4i1.1144>
60. Raya, A. B., Andiani, R., Siregar, A. P., Prasada, I. Y., Indana, F., Simbolon, T. G. Y., Kinasih, A. T., & Nugroho, A. D. (2021). Challenges, Open Innovation, and Engagement Theory at Craft SMEs: Evidence from Indonesian Batik. *Journal of Open Innovation: Technology, Market, and Complexity*, 7(2), 121. <https://doi.org/10.3390/joitmc7020121>
61. Ridwan Maksum, I., Yayuk Sri Rahayu, A., & Kusumawardhani, D. (2020). A Social Enterprise Approach to Empowering Micro, Small and Medium Enterprises (SMEs) in Indonesia. *Journal of Open Innovation: Technology, Market, and Complexity*, 6(3), 50. <https://doi.org/10.3390/joitmc6030050>
62. Rodrigues, M., Franco, M., Silva, R., & Oliveira, C. (2021). Success Factors of SMEs: Empirical Study Guided by Dynamic Capabilities and Resources-Based View. *Sustainability*, 13(21), 12301. <https://doi.org/10.3390/su132112301>
63. Samir, M. (2020). The Impact of Knowledge Management on SMEs Performance in Egypt. *OALib*, 07(07), 1–23. <https://doi.org/10.4236/oalib.1106445>
64. Schubert, F., Henseler, J., & Dijkstra, T. K. (2018). Confirmatory Composite Analysis. *Frontiers in Psychology*, 9, 1–14. <https://doi.org/10.3389/fpsyg.2018.02541>
65. Seibert, S. E., Kraimer, M. L., & Liden, R. C. (2001). A Social Capital Theory of Career Success. *Academy of Management Journal*, 44(2), 219–237. <https://doi.org/10.2307/3069452>
66. Setini, M., Yasa, N. N. K., Supartha, I. W. G., & Giantari, I. G. A. K. (2021). The effects of knowledge sharing, social capital and innovation on marketing performance. *International Journal of Data and Network Science*, 5(3), 257–266. <https://doi.org/10.5267/j.ijdns.2021.6.008>
67. Setiyono, W. P., Iqbal, M., Alfisyah, R., Pebrianggara, A., & Shofyan, M. (2022). Determinants of SMEs performance: The role of knowledge management, market orientation, and product innovation. *JEMA: Jurnal Ilmiah Bidang Akuntansi Dan Manajemen*, 19(1), 22–40. <https://doi.org/10.31106/jema.v19i1.15036>
68. Sijabat, R. (2022). The Effects of Business Digitalization and Knowledge Management Practices on Business Performance: Findings from Indonesian Micro, Small, and Medium Enterprises. *BISNIS & BIROKRASI: Jurnal Ilmu Administrasi Dan Organisasi*, 29(2), 101–116. <https://doi.org/10.20476/jbb.v29i2.1350>
69. Subagja, A. D., Ausat, A. M. A., Sari, A. R., Wanof, M. I., & Suherlan, S. (2023). Improving Customer Service Quality in MSMEs through the Use of ChatGPT. *Jurnal Minfo Polgan*, 12(2), 380–386.
70. Tran Pham, T. K. (2022). Linking social capital and knowledge sharing: the moderating role of meaningful work with the mediation of emotional energy. *VINE Journal of Information and Knowledge Management Systems*, 227(7), 1.
71. van den Hooff, B., & de Ridder, J. A. (2004). Knowledge sharing in context: the influence of organizational commitment, communication climate, and CMC use on knowledge sharing. *Journal of Knowledge Management*, 8(6), 117–130. <https://doi.org/10.1108/13673270410567675>
72. Wuryaningrat, N. F. (2013). Knowledge Sharing, Absorptive Capacity, and Innovation Capabilities: An Empirical Study on Small and Medium Enterprises in North Sulawesi, Indonesia. *Gadjah Mada International Journal of Business*, 15(1), 61–78.
73. Xie, G., Wang, L., & Lee, B. (2021). Understanding the Impact of Social Capital on Entrepreneurship Performance: The Moderation Effects of Opportunity Recognition and Operational Competency. *Frontiers in Psychology*, 12, 1–10. <https://doi.org/10.3389/fpsyg.2021.687205>
74. Yasa, N. N. K., Giantari, I. G. A. K., Setini, M., Sarmawa, W., Laksmi, P., Rahmayanti, D., & Dharmanegara, I. B. A. (2020). Service strategy based on Tri Kaya Parisudha, social media promotion, business values, and business performance. *Management Science Letters*, 10(13), 2961–2972. <https://doi.org/10.5267/J.MSL.2020.5.029>
75. Zahra, S. A., Ireland, R. D., & Hitt, M. A. (2000). International Expansion by New Venture Firms: International Diversity, Mode of Market Entry, Technological Learning, and Performance. *Academy of Management Journal*, 43(5), 925–950. <https://doi.org/10.2307/1556420>

Competitive Social Capital in Improving SMEs Performance: Role of Knowledge Donating and Knowledge Collecting

ORIGINALITY REPORT

13%

SIMILARITY INDEX

11%

INTERNET SOURCES

9%

PUBLICATIONS

2%

STUDENT PAPERS

PRIMARY SOURCES

1	www.researchgate.net Internet Source	1%
2	etd.uum.edu.my Internet Source	1%
3	ojs.journalsdg.org Internet Source	<1%
4	jurnal.polgan.ac.id Internet Source	<1%
5	dokumen.pub Internet Source	<1%
6	e-jabt.org Internet Source	<1%
7	ejournal.indo-intellectual.id Internet Source	<1%
8	Eugenie Byukusenge, John C. Munene. "Knowledge management and business performance: Does innovation matter?", Cogent Business & Management, 2017 Publication	<1%

9	garuda.kemdikbud.go.id Internet Source	<1 %
10	link.springer.com Internet Source	<1 %
11	Dwi Ratmono, Frendy, Zuhrohtun Zuhrohtun. "Digitalization in management accounting systems for urban SMEs in a developing country: A mediation model analysis", Cogent Economics & Finance, 2023 Publication	<1 %
12	simad.edu.so Internet Source	<1 %
13	gbata.org Internet Source	<1 %
14	theses.hal.science Internet Source	<1 %
15	www.mdpi.com Internet Source	<1 %
16	Mahmoud M. Migdadi, Mohammed K. Abu Zaid, Mohammed Yousif, Ra'd Almestarihi, Khalil Al-Hyari. "An Empirical Examination of Knowledge Management Processes and Market Orientation, Innovation Capability, and Organisational Performance: Insights from Jordan", Journal of Information & Knowledge Management, 2017	<1 %

17

Submitted to Postgraduate Institute of Management

Student Paper

<1 %

18

Submitted to The Robert Gordon University

Student Paper

<1 %

19

bura.brunel.ac.uk

Internet Source

<1 %

20

Submitted to Lehigh University

Student Paper

<1 %

21

Submitted to Universitas Brawijaya

Student Paper

<1 %

22

Submitted to Universitas Muhammadiyah Sukabumi

Student Paper

<1 %

23

Viva Arifin, Mira Kartiwi, Lili Marziana Abdullah. "Predicting Sources of Self-Efficacy as Factors of IT Student Learning Behavior in Improving IT Competence", 2021 9th International Conference on Cyber and IT Service Management (CITSM), 2021

Publication

<1 %

24

hdl.handle.net

Internet Source

<1 %

25

research.unl.pt

Internet Source

<1 %

26	Submitted to Landmark University Student Paper	<1 %
27	Submitted to Swinburne University of Technology Student Paper	<1 %
28	Yuewen Liu, Xiangyu Chang, Wayne Wei Huang. "Recommending Friends in Local Social Networks", Proceedings of the 2014 International Conference on Big Data Science and Computing, 2014 Publication	<1 %
29	journal2.um.ac.id Internet Source	<1 %
30	jurnal.yoctobrain.org Internet Source	<1 %
31	mail.online-journal.unja.ac.id Internet Source	<1 %
32	openrepository.aut.ac.nz Internet Source	<1 %
33	scirp.org Internet Source	<1 %
34	pearl.plymouth.ac.uk Internet Source	<1 %
35	Ana Licerán-Gutiérrez, Manuel Cano-Rodríguez. "Using partial least squares in	<1 %

archival accounting research: an application to earnings quality measuring", Spanish Journal of Finance and Accounting / Revista Española de Financiación y Contabilidad, 2019
Publication

36

Felipe Nodari, Mirian Oliveira, Antonio Carlos Gastaud Maçada. "Organizational performance through the donation and collection of interorganizational knowledge", VINE Journal of Information and Knowledge Management Systems, 2016
Publication

<1 %

37

Phong Ba Le, Hui Lei. "How transformational leadership supports knowledge sharing", Chinese Management Studies, 2017
Publication

<1 %

38

ejournal.undip.ac.id
Internet Source

<1 %

39

eprints.ums.ac.id
Internet Source

<1 %

40

sajhrm.co.za
Internet Source

<1 %

41

International Journal of Operations & Production Management, Volume 34, Issue 1 (2013-12-14)
Publication

<1 %

42 Lutfi Trisandi Rizki, Jamaliah Said, Nor Farizal Mohammed. "The role of strategic agility on sustainable competitive advantage of private higher education institutions", *Corporate and Business Strategy Review*, 2023
Publication <1 %

43 Marya Ahmad, Khurshid Ahmad, Rubina Bhatti. "Assessing the impact of knowledge management factors on digital resources acceptance: a survey of postgraduate students of public sector universities of Punjab", *The Electronic Library*, 2023
Publication <1 %

44 core.ac.uk
Internet Source <1 %

45 ejournal.insuriponorogo.ac.id
Internet Source <1 %

46 ijssr.ridwaninstitute.co.id
Internet Source <1 %

47 iugspace.iugaza.edu.ps
Internet Source <1 %

48 journal.sbm.itb.ac.id
Internet Source <1 %

49 koreascience.or.kr
Internet Source <1 %

50

Internet Source

<1 %

51

www.jurnal.polgan.ac.id

Internet Source

<1 %

52

www.ncbi.nlm.nih.gov

Internet Source

<1 %

53

Ju-Yeon Uhm,. "Development and validation of the school healthcare partnership scale for school nurses", *Journal of Pediatric Nursing*, 2023

Publication

<1 %

54

Margaret L. Sheng, Abu Amar Fauzi. "Institutional behavior mechanism: Exploring the impacts of macro-environmental stimuli on continued digital payment adoption behavior", *Computers in Human Behavior*, 2023

Publication

<1 %

55

Nada Khachlouf, Bertrand V. Quélin. "Interfirm ties and knowledge transfer: The moderating role of absorptive capacity of managers", *Knowledge and Process Management*, 2018

Publication

<1 %

56

Nada Moufdi, Ali Mansouri. "Family social capital and governance of family businesses: The emerging market evidence", *Corporate*

<1 %

Governance and Organizational Behavior Review, 2022

Publication

57

Sanmugam Annamalah, Pradeep Paraman, Selim Ahmed, Thillai Raja Pertheban et al. "Exploitation, exploration and ambidextrous strategies of SMES in accelerating organisational effectiveness", Journal of Global Operations and Strategic Sourcing, 2023

Publication

<1 %

58

Yun Zhang, Wei Xi, Feng Zeng Xu. "Determinants of employee innovation: an open innovation perspective", Journal of Hospitality Marketing & Management, 2021

Publication

<1 %

59

Zhimin Wang, Kwek Choon Ling. "chapter 4 Organizational Learning and Technological Innovation Practices", IGI Global, 2020

Publication

<1 %

60

caer.narxoz.kz

Internet Source

<1 %

61

ejournal.aibpm.org

Internet Source

<1 %

62

mpra.ub.uni-muenchen.de

Internet Source

<1 %

phd.lib.uni-corvinus.hu

63

Internet Source

<1 %

64

repository.kemu.ac.ke:8080

Internet Source

<1 %

65

researchonline.ljmu.ac.uk

Internet Source

<1 %

66

www.businessperspectives.org

Internet Source

<1 %

67

www.frontiersin.org

Internet Source

<1 %

68

www.igi-global.com

Internet Source

<1 %

69

"Complex, Intelligent, and Software Intensive Systems", Springer Science and Business Media LLC, 2020

Publication

<1 %

70

Anders Dysvik, Robert Buch, Bård Kuvaas. "Knowledge donating and knowledge collecting", Leadership & Organization Development Journal, 2015

Publication

<1 %

71

Ferly Agustina Sairmaly. "Human Capital Development and Economic Growth: A Literature Review on Information Technology Investment, Education, Skills, and Productive Labour", Jurnal Minfo Polgan, 2023

<1 %

72

Silvy Sondari Gadzali, Junaid Gazalin, Sutrisno Sutrisno, Yanto Budi Prasetya, Abu Muna Almaududi Ausat. "Human Resource Management Strategy in Organisational Digital Transformation", Jurnal Minfo Polgan, 2023

Publication

<1 %

73

doaj.org
Internet Source

<1 %

74

oapub.org
Internet Source

<1 %

Exclude quotes Off

Exclude matches Off

Exclude bibliography On

Competitive Social Capital in Improving SMEs Performance: Role of Knowledge Donating and Knowledge Collecting

GRADEMARK REPORT

FINAL GRADE

GENERAL COMMENTS

/0

PAGE 1

PAGE 2

PAGE 3

PAGE 4

PAGE 5

PAGE 6

PAGE 7

PAGE 8

PAGE 9

PAGE 10

PAGE 11

PAGE 12

PAGE 13
