

ISBN: 978-602-8047-83-8



PROCEEDINGS

International Conference Enhancing Education Quality In Facing Asian Community

*Management
and Governance*

Quality Assurance

*Teaching
and Learning*

Post Graduate Program
University of PGRI Semarang

Post Graduate Program, University of PGRI Semarang
Main Hall of Gedung Pusat 7th Floor, 30th May 2015
Semarang, Indonesia

Proceeding:

International Conference: Enhancing Education Quality In Facing Asian
Community

Publishing Institute:

Post Graduate Program, University of PGRI Semarang

Director of Publication

Prof. Dr. Sunandar, M.Pd.

Board of Reviewers

Dr. Ngasbun Egar, M.Pd, Dr. Suwandi, M.Pd, Akmal, Ph.D., Dr. Yovitha
Yuliejanjintingsih, and M.Pd, Dr. Nurkolis, M.M. Indri Kustantinah, S.S.,
M.Hum., Sukma Nur Ardini, SS. M.Pd, Th. Cicik Sophia, S.S. M.Pd, Ririn
Ambarini, S.Pd, M.Hum, and Laily Nur Affiani, S.S., .Hum.

Editors

Dr. Nurkolis, M.M, and Dr. Harjito, M.Hum.

Lay Out

Dr. Nurkolis, M.M.

Address:

Jl. Lingga Raya No. 6 Dr. Cipto Semarang
ISBN: 978-602-8047-83-8

Website: www.upgris.ac.id

E-mail: educonference2015@gmail.com

All right reserved. No part or all of this publication may be reproduced without the prior
written permission of Post Graduate Program – University of PGRI Semarang. All articles in
this proceeding are not the official opinions and standings of editors. Contents and
consequencies resulted from the articles are responsibilities of individual writers.

PREFACE

In line with the development of human civilization, competition has become one of the central issues arising among countries. It demands the nations to have goods and services of good quality. The quality of goods and services provided by a nation depend on the quality of the human resources. Furthermore, the quality of the human resources depends much on the quality of education of the nation. Therefore, the demand on the education quality is reasonably true. The fact shows that only qualified education can produce qualified human resources; and only qualified human resources can produce goods and services of good quality for regional as well as international market. In addition, quality education can only be obtained through a learning process of good quality, good management of quality education, good education quality assurance, research by qualified faculty, and other factors.

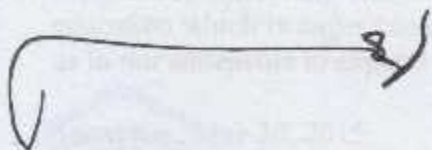
Referring to those facts, the Postgraduate Program of University of PGRI Semarang Indonesia hosts an interdisciplinary International Conference on the exploration of a broad range of Educational Quality themes focusing on the quality enhancement of: 1) education management, 2) teaching-learning process, 3) education quality assurance, and 4) the quality of education research.

The conference is hopefully can be a forum for exchanging ideas and research outcomes and for addressing challenges to the vision of an integrated ASEAN Community in relation to the quality of higher education, particularly for academics and students, scholars, experts, and researchers.

On behalf of the Committee, I would like to express our heartfelt thanks to Mr. Mark Heyward, Ph.D. (Australia), Ms. Sopantini, Ph.D. (Australia), Prof. Dr. Sugiyono, M.Pd. (Indonesia), and Mr. Manish Semwal, Ph.D (India) for their incredible contribution as the key speakers. Our gratitude also goes to Rector of University of PGRI Semarang for all the facilities provided, with which the conference runs well. Special thanks go as well to all the presenters and participants without whom this conference may not run. To anyone contributing and participating, I wish that we will have a very productive and successful conference for the betterment of education quality.

Semarang, May 30, 2015.

Chair of OC,



Dr. Ngasbun Eggar, S.Pd., M.Pd.
Deputy Director of Post Graduate Program
University of PGRI Semarang

WELCOMING SPEECH

Dear Speakers, Esteemed guests, participants, Ladies and gentlemen,

We are delighted and honored to host this conference on Enhancing Education Quality in facing Asian Community. I am very pleased to welcome you to University of PGRI Semarang and to this conference. I wish for you an enjoyable and productive stay in our beautiful capital city of Central Java.

Your presence here this morning at this international conference emphasizes important aspects of the quality of education especially focusing on education management, teaching learning process, education quality assurance, and researches in education. I am confident that the conference will stimulate discussion about issues of common concern in the field of quality education. By the end of our sessions, I believe that we will be able to identify benefits of our work together that will apply individually and collectively to educational practices in our contexts.

Ladies and Gentlemen, we, Post Graduate Program of the University of PGRI Semarang, take special interest in this conference for at least two reasons: Firstly, the focus of the conference is education, a process that is at the heart of the development of our country. The quality of education will depends much on the quality of the management, teaching-learning process, researches, as well as the quality assurance, beside other important aspects. Secondly, this is an international conference. Conferences such as this give us an opportunity to sift through international ideas and to choose those which can be adapted to improve our national institutions. International discussions allow us to make our contributions to the major world-wide issues of the day as well and thus to establish our place among the nations of the world. The substance of the various sessions of this conference and the expertise of the plenary and parallel presenters and other participants will provide us with excellent opportunities both to give and to receive from the international dialogue.

Finally, I take this opportunity to express my hope that this conference will be an important step in our efforts to improve the quality of education everywhere. I wish you all the success in your efforts.

Once again, let me welcome you to University of PGRI Semarang. We look forward to learning about your discussions and deliberations. I should note that the Post Graduate Program of University of PGRI Semarang has been in the efforts of developing an effective education which is under constant assessment and improvement. This conference should help us in our endeavors to expand and improve.

Semarang, May 30, 2015.
Chair of SC



Prof. Dr. Sunandar, M.Pd.
Director of Post Graduate Program
University of PGRI Semarang

TABLE OF CONTENTS

No	Writers	Title	Pages
1	Mark Heyward and Aos Santosa Hadiwijaya	Teacher Deployment and the Challenge of Small Schools in Indonesia	1-35
2	Sugiyono	Doing Quality Education Research	36-57
3	Sopantini	Reforming teaching practice in Indonesia	58-82
4	Sudharto	New Management of Temporary Teachers to Ensure Excellent Services at Schools	83-93
5	Suwandi, Sudharto, Soegeng, Sunandar, and Sukma Ardini	The Impact of Character Education on the Behaviour of Lecturers, Employees, and Students of University of PGRI Semarang	94-100
6	Dwi Anggani Linggar Bharati	Preliminary Research on Developing Procedural Text Material Containing Fun Activities to Strengthen the Students' Characters (The Case of the Eighth Graders of Junior High School)	101-106
7	Nurkolis	Teacher Management Challenges in the District of Semarang	107-116
8	Ngasbun Egar, Siti Musarokah, and Fitri Yulianti	Dangling Modifiers in Research Results and Discussion Written by the English Department Students of University of PGRI Semarang in the Academic Year 2013/2014	117-129
9	Bambang Ismanto	Management of Financing Compulsory Education to Improve Quality of Education in Indonesia	130-139
10	Fatkuroji	Marketing Management Education Institutions Through 7 P (Education Processes, Products, People, Place, Price, Physical Evidence, and Promotion)	140-153
11	Yovitha Yuliejantini-ngsih	Critical Study of Government Policy in Induction Program Based on the Regulation of National Education Minister No.27 In 2010	154-161
12	Nur Khoiri	Effectiveness of Education Development Policy Model in the District of Jepara	162-182
13	Hari Wuljanto	Management Model of Nationalism-Based Character Education to Develop Nationalism at the Elementary Schools	183-198
14	Endang Wuryandini	The Implementation of Sustainable Professional Development for Teacher Career Development	199-212
15	Maryadi	The Performance of Central Java Province Basic Education In 2009	213-221

No	Writers	Title	Pages
16	Sri Suneki	Improving the Quality of Education Based on the Professionalism of Educators	222-226
17	Wahyu Sri Ambar Arum	Enhancing Quality of School-Based Management through the Implementation of the Values of Personal Characteristics	227-235
18	Saptono Nugrohadi	School Governance as an Effort to Develop a Local Wisdom-Based Education	236-245
19	Sukasih	Decision-Making and Citizen Action Learning Strategies in Social Studies Islamic Elementary School in Developing Social Participation of Student	246-257
20	Nunik Retno Herawati	Open Auction of Evaluation Process, Making The Bureaucracy Reform In Indonesia	258-275
21	Mukh. Khusnaini, Ghufron Abdullah, and Suwandi	The Effect of Certification for Teacher and Working Motivation toward the Teacher's Performance	276-283
22	Dewi Lestari, and Ervina Eka Subekti	The Development of Educational Management in the Area of the Forefront, Outermost, and Backward Based on Finland Transmigration Teacher Program	284-296
23	Debora Kerentika, and Mei Fita Asri Untari	The Power of Educational Management in Facing Asian Community	297-302
24	Mundilarno	Service Approach in the Context of Quality Improving of the Education Management	303-309
25	Hari Karyono, and Suryaman	School Quality Management Integrated: Solution To Improve Quality of Education in Elementary and Secondary Education	310-318
26	G. Rohastono Ajie	The Contribution of the Work Cultural to Improve Quality of Human Resources in Higher Education	319-327
27	M.Th.Sri Rejeki Retnaning-dyastuti	The Role of Lecturers to Produce Quality Graduates in the Higher Education	328-340
28	Tri Harmono	Start-SMALL: Strategy To Improve the Schools Quality	341-349
29	Adhi Kusmantoro, Sri Sukamta, and Agus Nuwolo	Digital Circuit Design And Simulation Of Combination For Controlling Pump Electric Motors Hydrant With Zelio Soft 2	350-363
30	Adhi Kusmantoro, Sri Sukamta, and Agus Nuwolo	Design PWM Sinusoidal Analog Single Phase Inverter Based OP-AMP	364-380
31	Atik Rahmawati	The Impact of Multiple Level Representations-Based Learning on Students' Understanding About Chemistry Concepts	381-387

No	Writers	Title	Pages
32	Nur Abidin	Developing of Friendly Child Learning in SMK Negeri 1 Petarukan	388-396
33	Ita Puspitasari	A Dozen Various Ways to Manage a More Fun English Teaching and Learning Process	397-405
34	Ria Yulia Gloria	PBL Based-Local Culture Science To Create A Meaningful Learning	406-413
35	Moh. Aniq Kh. B.	Mind's Revival: Philosophical Views on the Indonesian Education Idioms	414-419
36	Senowarsito, Listyaning S., Suwamo Widodo, and Arso Setyaji	Intervention Model on Child Friendly Education	420-429
37	A.Y. Soegeng Ysh., and Ghufron Abdullah	The Significance of Wayang Purwa Performance	430-446
38	Rasiman	The Profile of Critical Thinking at Senior High School Students in Mathematics Problems Solving with Intermediate Mathematics Skills	447-456
39	Anisa Kumala Ningrum, and Fine Reffiane	The Enhancement of Student Learning Result Through Implementation of Experimental Method with Snowball Throwing Model of Magnetic Force Materials	457-468
40	Ngasbun Egar, and Oktaviani Adhi S	Effectiveness of Violence Prevention for Elementary School Students Through Comics	469-479
41	Kurniaputri Abdinegara, and Riris Setyo Sundari	Preparing the Entrepreneurial Spirited Youths Through Entrepreneurship Education in Facing the ASEAN Economic Community	480-488
42	Siti Mariah	Employability Vocational Skills on Teacher Candidates Competency of the Dressmaking Skill Program	489-500
43	Harjito	The Improvement of Learning Quality on Literature	501-507
44	M. Syaipul Hayat, and Ipah Budi Minarti	Process and Quality Debriefing in Scientific Inquiry of Biology Teacher Prospective through Argumentation	508-523
45	Intan Indarti, Muhdi, Senowarsito, and Listyaning Sumardiyani.	Developing Learning Resources of Blended Learning to Improve Student's Soft Skills and Teaching Skills	524-531
46	Samiyem, Ghufron	Learning Quality Management of Automotive	532-538

No	Writers	Title	Pages
	Abdullah, and Suwandi	Excellence Class in Vocational School Palapa Semarang	
47	Titik Haryati, and Oktaviani Adhi Suciptaningsih	Socialization Model of National Character Education Based on Environmental in Elementary Schools	539-545
48	Silviana Dewi, and Fine Reffiane	Application of Environment –Based Learning Model as an Effort to Introduce Coastal Natural Resources Potency	546-554
49	Fenny Roshayanti, and Sumarno	Developing Student Scientific Inquiry Skills Through Argumentation on Integrated General Biology Course	555-562
50	Dwi Prasetyawati DH, and Ratna Wahyu P	The Development of Science Education Using a Scientific Approach at the Primary Education	563-570
51	Taufik Alam Huda, and Henry Januar Saputra	Developing E-comic Learning Media to Increase Interest and Learning Achievement of Forth Grande Primary School Students	571-583
52	Pratama Irwin Talenta	Developing Monu – Monu (Monopoly, Snakes And Ladders) as Fun Activities Based Written Vocabulary of Procedure Text Material	584-596
53	Nizaruddin, Muhtarom, and Sugiyanti	A Game-Based Learning Through Realistic Mathematics Education (RME) for Teaching and Learning to Improve Students' Problem Solving Skills	597-605
54	Ismatul Khasanah, and Venty	The Improvement of Quality Learning by Using Integrated Model Based Learning Center	606-613
55	Rukni Setyawati, Sarwiji Suwandi, Andayani, and Muh. Rohmadi	A Critical Literary Review of Expert Opinions toward Textbook Development	614-631
56	Sunandar, Duwi Nuvitalia, and Sugiyanti	Evaluation of Learning Implementation with KIS Model	632-638
57	Hari Karyono, Wiwin Andriani, and Wawan Gunawan	Learning Method Character Education: Improved Optimization of Refraction Good Attitudes for Students in Kindergarten	639-649
58	Kartinah, and Dina Prasetyowati	Development of Mathematics Learning Aids Using Problem Posing Model-Based Character Education with CD-Assisted Learning from the Perspective Critical Thinking Skills of SMP Students	650-658

DESIGN PWM SINUSOIDAL ANALOG SINGLE PHASE INVERTER BASED OP-AMP

ADHI KUSMANTORO¹⁾, SRI SUKAMTA²⁾, AGUS NUWOLO¹⁾

¹⁾Department of Electrical Engineering, Faculty of Engineering, University of
PGRI Semarang

²⁾Department of Electrical Engineering, Faculty of Engineering, UNNES
Semarang

¹⁾adhitekunik@gmail.com

²⁾ssukamta2014@gmail.com

ABSTRACT

One of the electronic components that are widely used in the fields of control, power electronics, audio and video electronics are operational amplifiers (Op-Amp). In this study designed a PWM signal generator using basic components Op-Amp. PWM signal is raised is used to control the phase of the inverter output frequency. Having a frequency inverter output can be set normally used to control the speed of electric motors. One of the single-phase inverter applications that are widely used in home appliances stay is the air-conditioning equipment. PWM technique used in the inverter generates output voltage with low harmonics. To strengthen the PWM signal is done by using a driver amplifier circuit does not reverse the amount of reinforcement can be arranged according to voltage full wave bridge inverter driver. Harmonic distortion (% THD) that appears at the inverter output waveform occurs at frequencies greater reference is 1761, but lower output currents of 41A. Therefore, the efficiency of the inverter with great value occurs in the lower reference frequency setting is 74.56%.

Keywords: *Op-Amp, PWM unipolar, inverter*

Introduction

The development of electronics continues to progress very quickly. The development is based on the needs of the community, both industrial community and society in general. The development of electronics can be seen from the size of components and speed. One of the electronic components that are widely used in the fields of control, power electronics, audio and video electronics are operational amplifiers (Op-Amp). This study designed a PWM signal generator using basic components Op-Amp. PWM signal is raised to control the phase of the inverter of output frequency. The frequency of inverter output can be set normally by controlling the speed of electric motors. One of the single-phase inverter applications that are widely used in home appliances is the air-conditioning equipment. PWM technique uses in the inverter to generate output voltage with low harmonics.

Basic Theory

a. Op-Amp^[5]

Operational amplifiers (Op-Amp) are electronic components in the form of analog ICs and it is a response to strengthen dc or ac input signal. Operational amplifier was originally used to carry out arithmetic operations in analog computers by division multiplication, addition, subtraction, differential and integral. Operational amplifier which consists of several amplifiers are connected in a row. In the operational amplifier there are three parts: (a) the differential amplifier having a very large input impedance, (b) the voltage amplifier with very large gains, and (c) the amplifier output impedance that is very small.

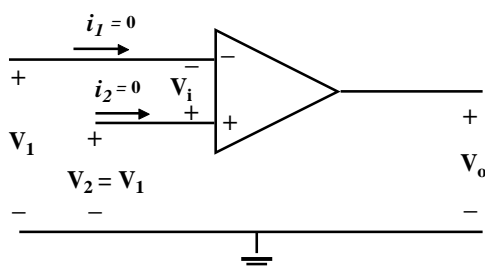


Figure 2.1 Ideal Op-Amp

In ideal conditions, V_1 is equal to V_2 , ideal properties owned operational amplifier open-loop voltage gain is infinite, infinite input impedance, but output impedance is zero, infinite bandwidth, infinite CMRR, and operational characteristics of the amplifier is not temperature dependent. Op-Amp can be used as a comparator for comparing the input signal, as an inverting amplifier and amplifier does not reverse as a signal generator or oscillator.

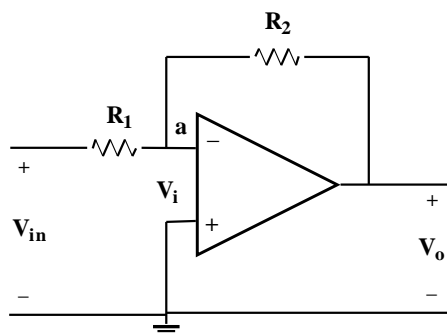


Figure 2.2 Inverting amplifier

Based on the current picture above equation knot, voltage V_i can be expressed

$$\text{by } \frac{(V_{in} + V_i)}{R_1} = -\frac{(V_i + V_o)}{R_2}$$

$$V_o = \frac{-R_2}{R_1} V_{in}$$

Reversing the voltage gain of the circuit is the ratio between the output voltage to the input voltage and it can be expressed as follows:

$$A_v = \frac{-V_0}{V_{in}} = \frac{-R_2}{R_1} \dots\dots\dots(2.1)$$

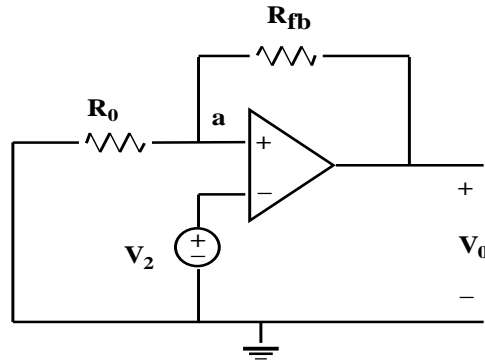


Figure 2.3 Non-Inverting amplifier

Equation output voltage of the amplifier circuit is not flipped, it can be described as

follows $\frac{V_2}{R_0} + \frac{(V_2 - V_0)}{R_{fb}} = 0$

$$\frac{V_0}{R_{fb}} = V_2 \left[\frac{1}{R_0} + \frac{1}{R_{fb}} \right]$$

$$V_0 = \left(1 + \frac{R_{fb}}{R_0} \right) V_2$$

Voltage gain (A) on the amplifier circuit is not flipped

$$A_v = \frac{V_0}{V_2} = \left(1 + \frac{R_{fb}}{R_0} \right) \dots\dots\dots(2.2)$$

The comparator is used to compare the two voltages at both input and produces a high voltage level / saturation voltage positive (+ Vsat) or low voltage level / negative saturation voltage (-Vsat) depending on the input voltage level. There are two types of comparators, namely: (a) Comparator Not Flipping (Non-Inverting Comparator), and (b) Reversing comparator (Inverting Comparator). Figure 2.5 shows the comparator does not reverse, if V_{in} is greater than V_{ref} , the output voltage comparator is + V_{sat} (+ V_{cc}). If V_{in} is smaller than V_{ref} , the output voltage is - V_{sat} (- V_{cc}).



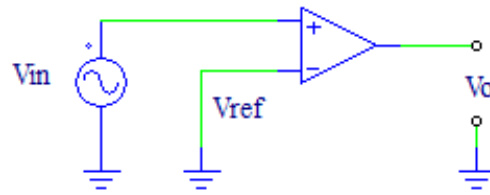


Figure 2.4 Non-inverting comparator

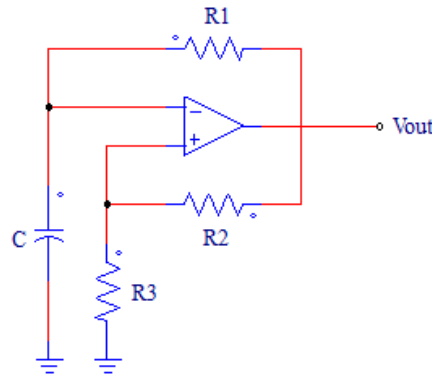


Figure 2.5 Square wave oscillator circuit

Op-Amp can be used as an oscillator to generate a triangular wave, a square, and a sinusoid. Figure 2.5 shows the chain of square wave generator. If the price of R_3 is equal to 86% of the price of R_2 , the output frequency is determined by the equation

$$f = \frac{1}{2R_1C} \dots\dots\dots(2.3)$$

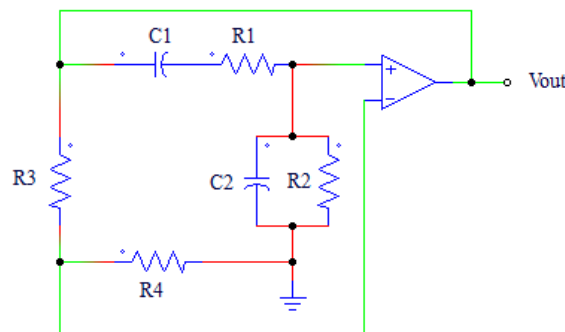


Figure 2.6 Wien bridge oscillator

Wien bridge oscillator generates sinusoidal waves with feedback given to the second input. Frequency selector network consisting of R_1 , C_1 and R_2 , C_2 provides positive feedback on the inputs treated not flipped. If R_1 together with R_2 and C_1 equal to C_2 , the output frequency is determined by the following equation

$$f = \frac{1}{2\pi\sqrt{R_1R_2C_1C_2}}$$

$$f = \frac{1}{2\pi RC} \dots\dots\dots(2.4)$$

b. Inverter^[3]

Based on the resulting voltage, inverter is divided into three-phase inverter and inverter single phase, where as generated inverter output waveform is divided into a half-wave inverter (halfwave) and full-wave bridge inverter (fullwave). The forms of ideal inverter output waveform is sinusoidal. But in reality, the inverter output waveform is not sinusoidal and it has harmonics. Harmonics that occur at the inverter output waveform can affect the performance of the equipment. The use of inverters in the industrial world is widely used to control the speed of induction motors. Inverter type is known as the VSD (variable speed drive). Besides, inverters are also used for backup power source provider (UPS). Figure 2.7 shows the full wave bridge inverter single phase that uses switches in the switching process. In the first half period (T/2), switch is actively working simultaneously and, current will flow from the source of positive voltage V_s , then passes through S_1 , load, and S_4 . In the second half period (T/2), switch is active and working simultaneously, current will flow from the negative voltage source V_s , and then pass S_3 , load, and S_2 .

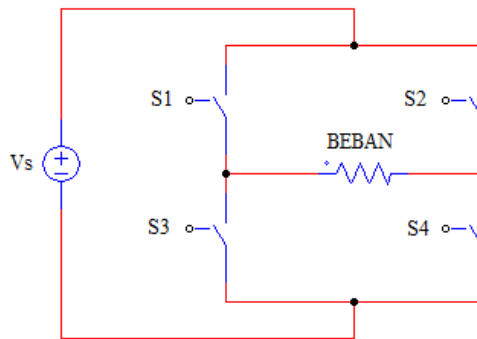


Figure 2.7 The working principle inverter

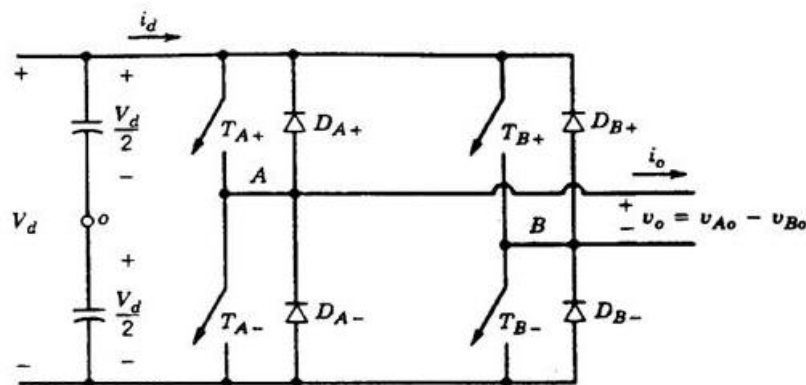


Figure 2.8 Full wave bridge inverter

To minimize harmonics at the inverter output waveform, PWM method is used (pulse width modulation). It forms a full wave bridge inverter circuit that uses a PWM technique shown in figure 2.8 In the first half period of the inverter output voltage of $+V_d/2$ is $V_{AO}(t)$ and in the second half period of the inverter output voltage $-V_d/2$ is the $V_{BO}(t)$, with the $V_{BO}(t) = -V_{AO}(t)$. Inverter output voltage is

$$v_o(t) = v_{AO}(t) - v_{BO}(t) = 2v_{AO}(t) \dots\dots\dots(2.5)$$

The PWM method is divided into two PWM method with bipolar switching voltage and PWM with unipolar voltage switching.

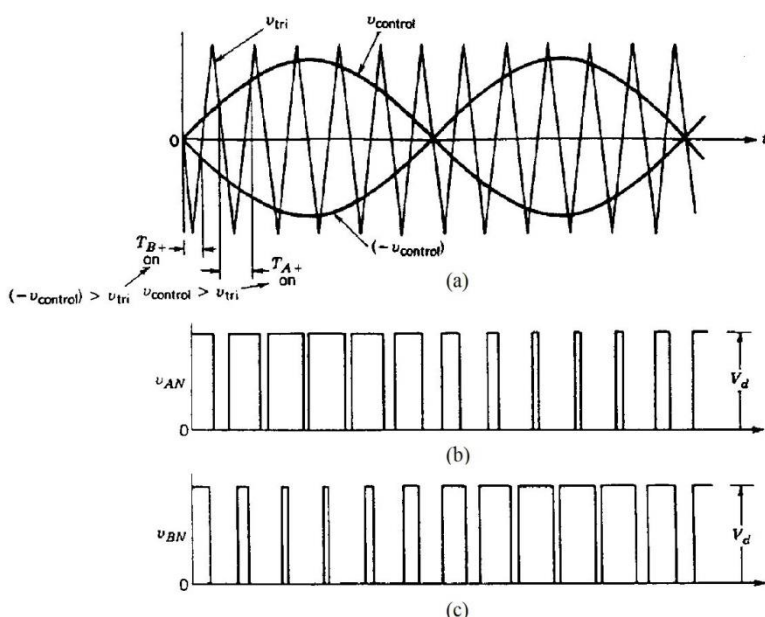


Figure 2.9 PWM with unipolar voltage switching single phase

In this method the output voltage V_{o1} with the fundamental frequency component is

$$V_{o1} = m_a V_d \quad (m_a \leq 1.0)$$

$$V_d < V_{o1} < 4/\pi V_d \quad (m_a > 1.0)$$

Waveform in PWM inverter with unipolar switching voltage method is produced by comparing the triangular wave (V_{tri}) with a sinusoidal wave ($V_{control}$). Fixed frequency triangular wave and sinusoidal wave frekusensi made variable. At the time of a positive period $V_{control} > V_{tri}$ the $T_A +$ on generating $V_{AN} = V_d$ and $V_{control} < V_{tri}$ then hands on to produce $V_{AN} = 0$. When the negative period $-V_{control} > V_{tri}$ then $T_B +$ on generating $V_{BN} = V_d$

and $-V_{\text{control}} < V_{\text{tri}}$ then on generating $V_{\text{BN}} = 0$.

Method

In this study, it uses a power simulator 9 in designing the circuit. In the circuit design the stage of studies uses operational amplifiers (Op-Amp) as follows:

1. The series of sinusoidal wave generator

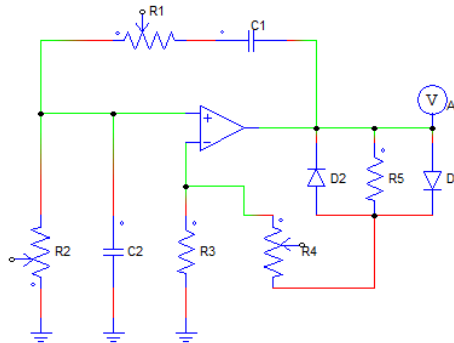


Figure 3.1 Wien bridge oscillator circuit

In designing a sinusoidal wave generator, wien bridge oscillator circuit is used the amount of V_A output frequency is set using a variable prisoners R_2 or R_1 .

2. The series of triangular wave generator

In generating a triangular wave, it is conducted in two phases. The first stage was raised square wave of the first Op-Amp circuit with a fixed frequency of 2,500 Hz magnitude. Square wave is then input into the integrator Op-Amp second, so that the output V_B is a triangular wave.

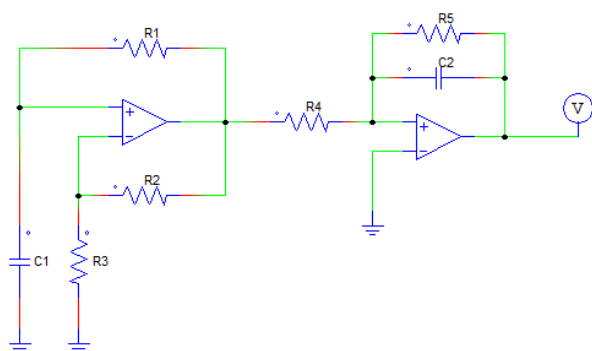


Figure 3.2 Triangular wave generator circuit

3. The comparator circuit

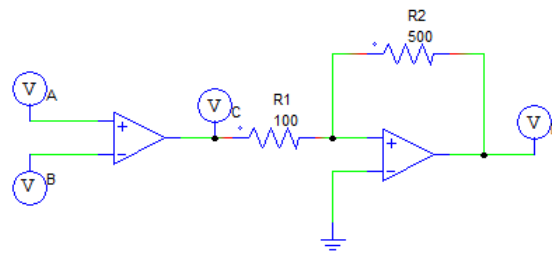


Figure 3.3 Circuit comparator

V_A sinusoidal wave and triangle wave V_B can be input to comparator circuit. V_C comparator circuit output is PWM wave with an amplitude of 1V. PWM waveform is amplified by 5 times with no reverse amplifier circuit with output V_D .

4. The series of phase separator

Phase separator circuit serves to generate two PWM signals with different logic level, NAND gates are used in the design of IC 7400. In addition, in a series of phase separators it uses optocoupler which serves to separate the PWM control circuit with a power circuit with a large voltage.

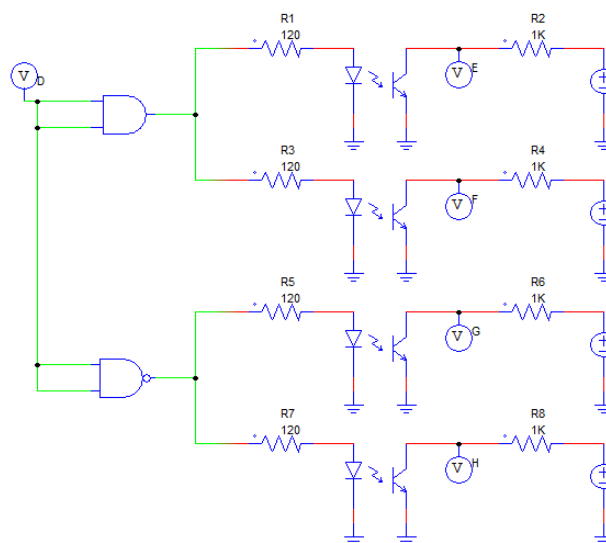


Figure 3.4 The series of phase separator

5. The PWM amplifier circuit

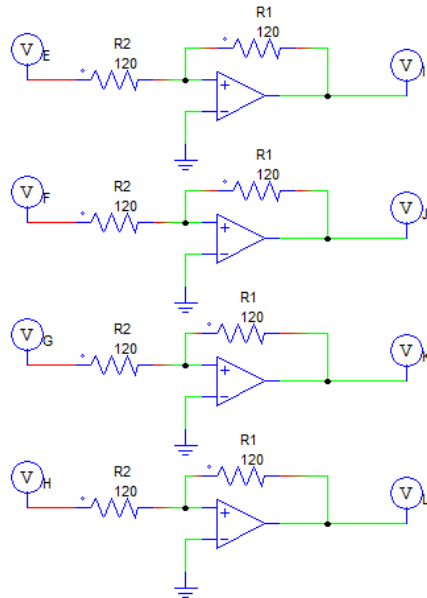


Figure 3.5 PWM amplifier circuit

PWM amplifier circuit serves to amplify the output signal for one optocoupler so it has the level of voltage of 5 V. The amplifier circuit using the PWM amplifier circuits do not flipped.

6. The driver circuit inverter

Driver circuit using BJT transistor that enabled the saturation and cut-off areas or as a switch. The output voltage driver circuit is used for driver inverter bridge circuit.

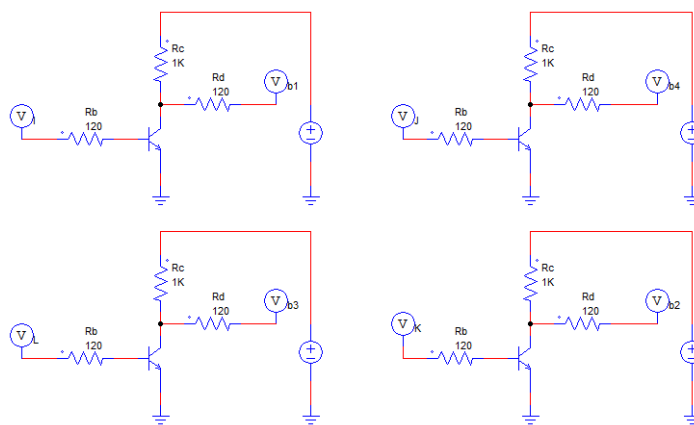


Figure 3.6 The driver circuit inverter

7. The inverter bridge circuit



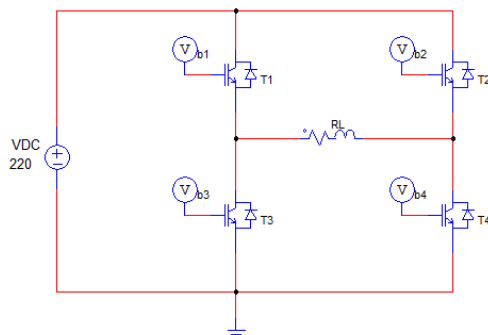


Figure 3.7 Single phase inverter bridge circuit

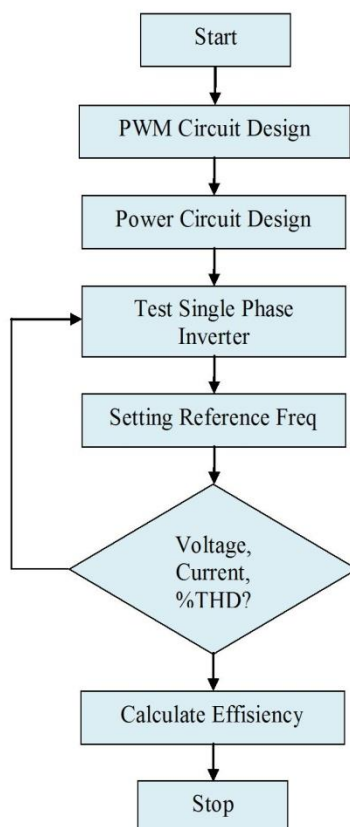


Figure 3.8 Algorithm research

Inverter bridge circuit uses a DC voltage of ± 220 V and the IGBT is as the main component of the inverter. Transistors T_1 and T_4 are working on a positive period and the transistors T_2 and T_3 are working on the current negative period.

Results and Discussion

a. Circuit Signal Generators

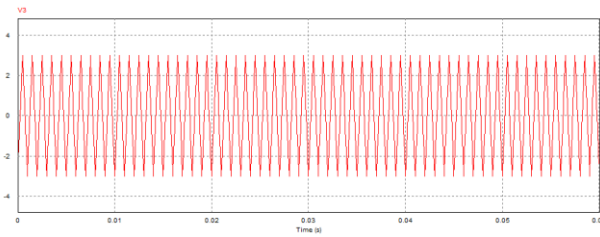


Figure 4.1 Triangle wave at a frequency of 2.500 Hz (V_B)

Triangular wave generator circuit produces output at a fixed frequency of 2.500 Hz with an amplitude of ± 3 V. The form of output wave shown in Figure 4.1. Figure 4.2 and figure 4.3 shows the sinusoidal wave that can be set the frequency, raised from wien bridge oscillator. Output frequency can be set from 0 to 50 Hz.

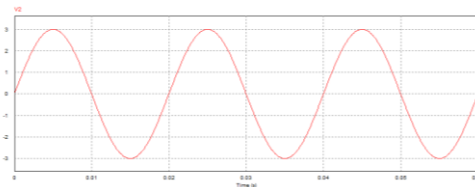


Figure 4.2 Sinusoidal wave at a frequency of 50 Hz (V_A)

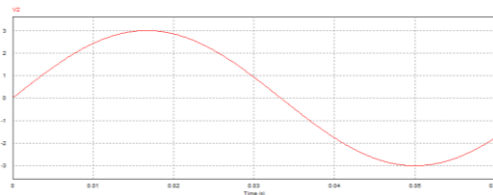


Figure 4.3 Sinusoidal wave at a frequency of 15 Hz (V_A)

b. Comparator Circuit

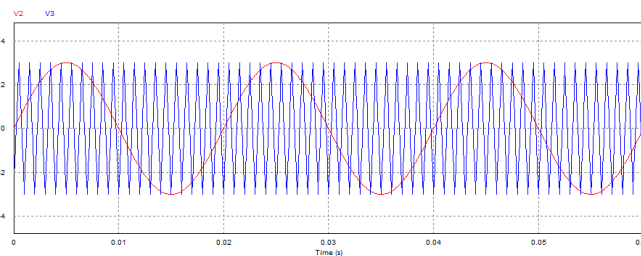


Figure 4.4 Comparator input wave at a frequency of 50 Hz V_A

Comparator circuit is used to compare the triangular wave that has a fixed frequency sinusoidal wave that has a variable frequency. The comparator output generates a PWM waveform.



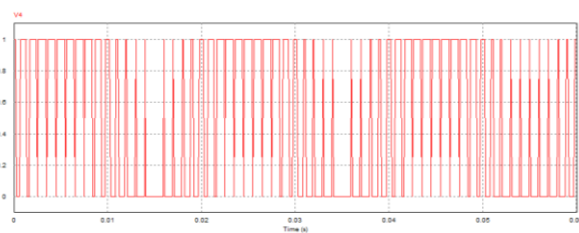


Figure 4.5 PWM wave at the comparator output frequency of 50 Hz V_A

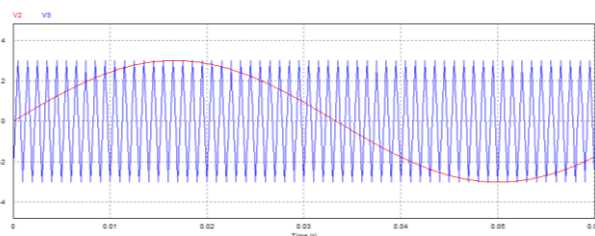


Figure 4.6 Comparator input wave at a frequency of 15 Hz V_A

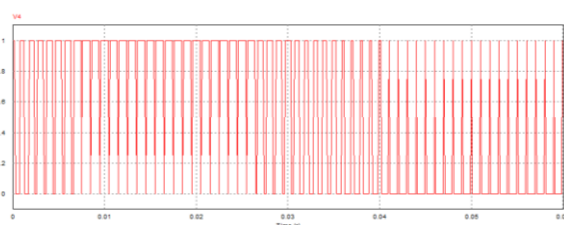


Figure 4.7 PWM wave at the comparator output frequency of 15 Hz V_A

Figure 4.8 shows the PWM waveform that has been reinforced with an amplitude of ± 5 V, PWM waveform is derived from the output of the comparator.

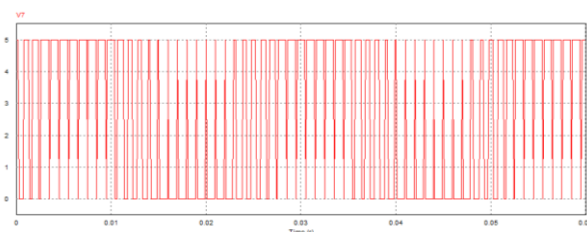


Figure 4.8 Wave PWM amplifier output

c. The series of Phase Separator

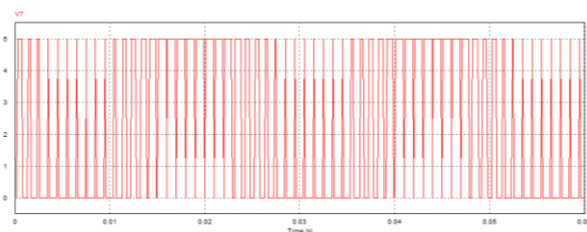


Figure 4.9 V_D phase PWM signal at a NAND gate

The series of phase separator produces two PWM waveform that has the same amplitude but have opposite logic signal. If the first phase has a logic 1, the second phase has a logic 0.

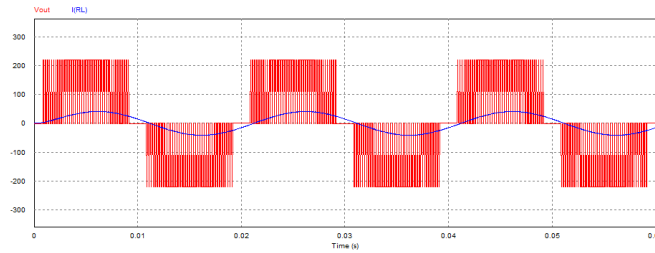


Figure 4.10 Inverter output waveform at a frequency of 50 Hz

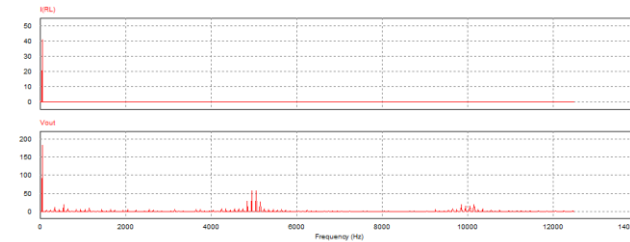


Figure 4.11 Harmonics in the inverter output frequency of 50 Hz

Inverter output waveform with a load $R = 10 \Omega$ and $L = 5 \text{ mH}$ with 50 Hz frequency sinusoidal wave generate unipolar PWM waveform with the greatest harmonics and a low output current is 41 A.

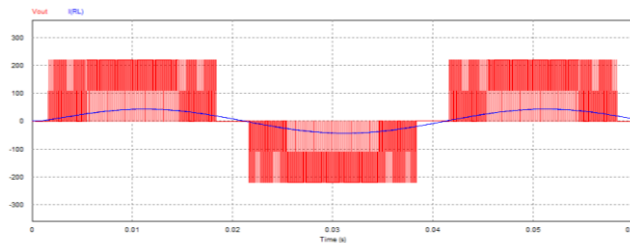


Figure 4.12 Inverter output waveform at a frequency of 25 Hz

In the settings 25 Hz frequency, sinusoidal wave generates load currents greater than the frequency of 50 Hz setting that is 42 652 A.

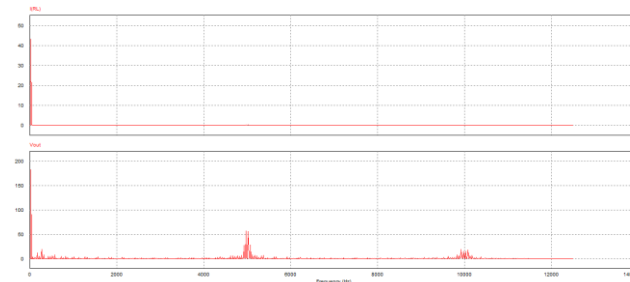


Figure 4.13 Harmonics in the inverter output frequency 25 Hz



At frequencies lower sinusoidal wave 15 Hz, harmonics appears at the inverter output waveform that is lower when compared to the frequency of 50 Hz, but the load current is greater when compared with other fundamental frequency.

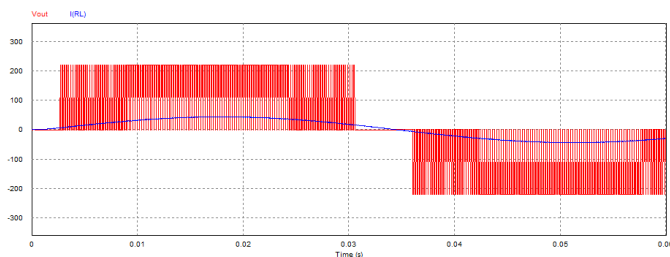


Figure 4.14 Inverter output waveform at a frequency of 15 Hz.

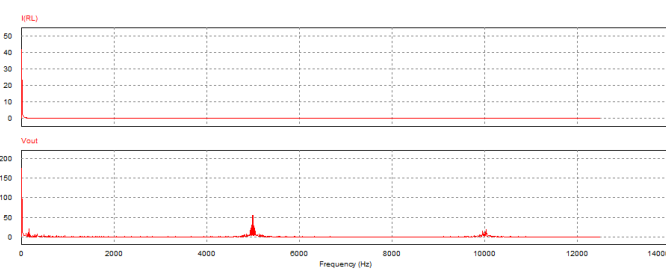


Figure 4.15 Harmonics in the inverter output frequency of 15 Hz

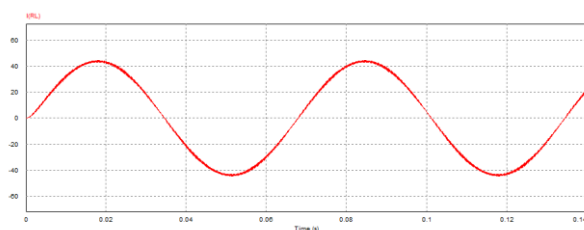


Figure 4.16 Load current at a frequency of 15 Hz.

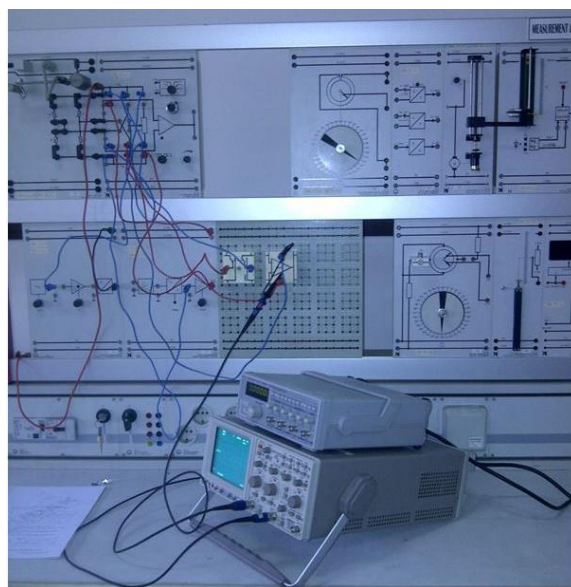


Figure 4.17 Measurement Op-Amp circuit

Based on Table 4.1 it appears that the reference frequency or fundamental frequency of 50 Hz the inverter will provide output current lower than the reference frequency 15 Hz, but the harmonic distortion (% THD) at the output of the inverter is lower in the low reference frequency. Inverter output voltage at the fundamental frequency changes give 219 999 Volt voltage stability. By changing the fundamental frequency of maximum efficiency in the single phase inverter occurs at a low frequency setting is 74.56%.

Table 4.1 Single phase output inverter variable

No	Reference Frequency (Hz)	Carrier Frequency (Hz)	Output Current (A)	Output Voltage (V)	THD (%)
1	50	2500	41.001	219.999	1.761
2	40	2500	41.608	219.999	1.698
3	35	2500	42.841	219.999	1.728
4	30	2500	42.229	219.999	1.688
5	25	2500	42.652	219.999	1.646
6	15	2500	43.824	219.999	1.622

Table 4.2 Efficiency Inverter load R-L series

No	Reference Frequency	Power Input (Watt)	Power Output (Watt)	Efficiency (%)
1	50	1.282,9036	370,1781	28,85
2	40	1.346,0247	475,9207	35,36
3	35	1.372,8937	532,4834	38,79
4	30	1.395,3506	643,4270	46,11
5	25	1.414,9666	824,1550	58,25
6	15	1.454,6842	1.084,5999	74,56



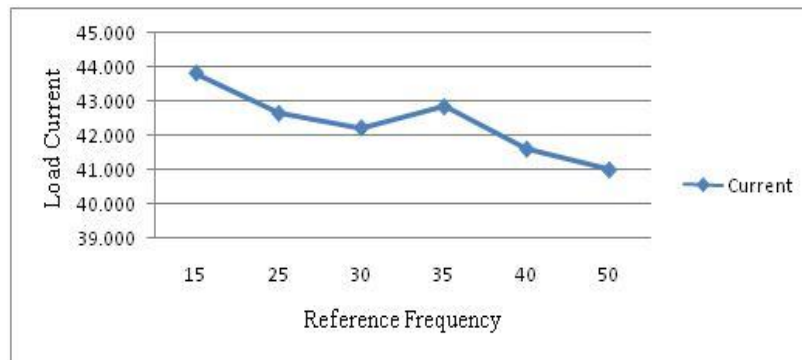


Figure 4.18 Comparison of the load current of the fundamental frequency

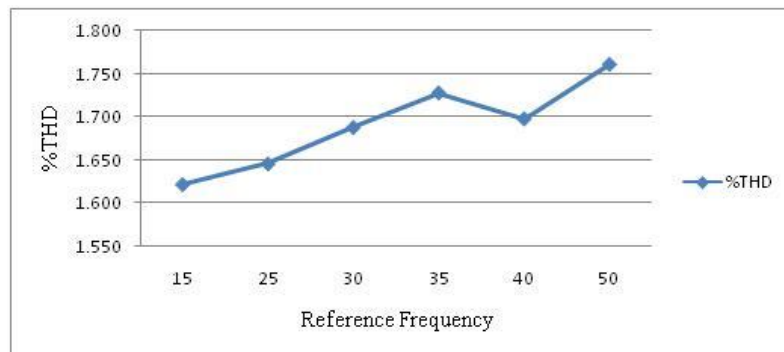


Figure 4.19 Comparison %THD against the fundamental frequency

Conclusion

First, Op-Amp is an analog electronic components that can be used to design a unipolar PWM signal with a sinusoidal wave generator to design an triangular wave.

Second, harmonic distortion (% THD) that appears most likely in the inverter output waveform at the fundamental frequency of the greatest namely 1,761, so the efficiency of the inverter with great value occurs in the setting of low fundamental frequency is 74.56%.

Third, to strengthen the PWM signal, it is done by using a driver amplifier circuit that does not reverse the amount of reinforcement that can be arranged according to voltage full wave bridge inverter driver.

Fourth, in setting the frequency or reference frequency sinusoidal wave effect on the load current. At a frequency of 50 Hz settings, it produces lower load currents when compared to the frequency setting 25 Hz or 15 Hz.

References

B.M. Bird, K.G. King, D.A.G. Pedder, , 1993. *Introduction to Power Electronics*, Wiley New York, NY.

M.Jacob, 2005. *Application and Design with Analog IC*, Prentice-Hall.

Ned Mohan, Tore M. Undeland, William P. Robbins, 1989. *Power Electronics: Converters, Applications, and Design*, John Wiley & Sons, Inc.

Thomas Casson, 2000. *Principles and Applications of Engineering*, McGraw-Hill Companies, Inc.

Robert F Coughlin, Frederick F. D, 2004. *Operational Amplifier and Linier Integrated Circuit*, Prentice-Hall.

